

# SYCE2 Antibody (N-term)

Affinity Purified Rabbit Polyclonal Antibody (Pab)

Catalog # AP10413a

## Product Information

---

Application	WB, FC, E
Primary Accession	<a href="#">Q6PIF2</a>
Other Accession	<a href="#">NP_001099048.1</a>
Reactivity	Human
Host	Rabbit
Clonality	Polyclonal
Isotype	Rabbit IgG
Clone Names	RB28153
Calculated MW	24690
Antigen Region	1-30

## Additional Information

---

Gene ID	256126
Other Names	Synaptonemal complex central element protein 2, Central element synaptonemal complex protein 1, SYCE2, CESC1
Target/Specificity	This SYCE2 antibody is generated from rabbits immunized with a KLH conjugated synthetic peptide between 1-30 amino acids from the N-terminal region of human SYCE2.
Dilution	WB~~1:1000 FC~~1:10~50 E~~Use at an assay dependent concentration.
Format	Purified polyclonal antibody supplied in PBS with 0.09% (W/V) sodium azide. This antibody is purified through a protein A column, followed by peptide affinity purification.
Storage	Maintain refrigerated at 2-8°C for up to 2 weeks. For long term storage store at -20°C in small aliquots to prevent freeze-thaw cycles.
Precautions	SYCE2 Antibody (N-term) is for research use only and not for use in diagnostic or therapeutic procedures.

## Protein Information

---

Name	SYCE2
Synonyms	CESC1 {ECO:0000250 UniProtKB:Q505B8}
Function	Major component of the transverse central element of synaptonemal

complexes (SCS), formed between homologous chromosomes during meiotic prophase. Requires SYCP1 in order to be incorporated into the central element. May have a role in the synaptonemal complex assembly, stabilization and recombination (By similarity).

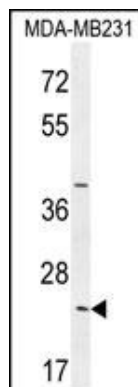
## Cellular Location

Nucleus {ECO:0000250|UniProtKB:Q505B8}. Chromosome {ECO:0000250|UniProtKB:Q505B8}. Note=Associates with chromatin. In prophase I stage of meiosis, localizes in the transverse central elements of the central region between lateral elements of the synaptonemal complexes. Found only where the chromosome cores are synapsed. Colocalizes with SYCE1 in the central elements (By similarity). {ECO:0000250|UniProtKB:Q505B8}

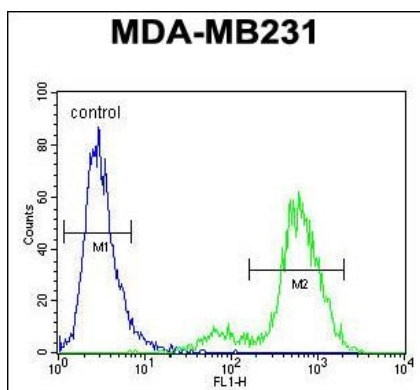
## References

Bailey, S.D., et al. Diabetes Care (2010) In press :  
Talmud, P.J., et al. Am. J. Hum. Genet. 85(5):628-642(2009)  
Bolcun-Filas, E., et al. J. Cell Biol. 176(6):741-747(2007)  
Costa, Y., et al. J. Cell. Sci. 118 (PT 12), 2755-2762 (2005) :  
Grimwood, J., et al. Nature 428(6982):529-535(2004)

## Images



SYCE2 Antibody (N-term) (Cat. #AP10413a) western blot analysis in MDA-MB231 cell line lysates (35ug/lane). This demonstrates the SYCE2 antibody detected the SYCE2 protein (arrow).



SYCE2 Antibody (N-term) (Cat. #AP10413a) flow cytometric analysis of MDA-MB231 cells (right histogram) compared to a negative control cell (left histogram). FITC-conjugated goat-anti-rabbit secondary antibodies were used for the analysis.

Please note: All products are 'FOR RESEARCH USE ONLY. NOT FOR USE IN DIAGNOSTIC OR THERAPEUTIC PROCEDURES'.