

SCXA Antibody (C-term)

Affinity Purified Rabbit Polyclonal Antibody (Pab)

Catalog # AP10439B

Product Information

Application	IHC-P, WB, E
Primary Accession	Q7RTU7
Other Accession	Q64124 , P59101 , NP_001073983.1 , NP_001008272.1
Reactivity	Human, Rat, Mouse
Predicted	Chicken
Host	Rabbit
Clonality	Polyclonal
Isotype	Rabbit IgG
Calculated MW	21596
Antigen Region	172-201

Additional Information

Gene ID	642658
Other Names	Basic helix-loop-helix transcription factor scleraxis, Class A basic helix-loop-helix protein 41, bHLHa41, Class A basic helix-loop-helix protein 48, bHLHa48, SCX, BHLHA41, BHLHA48, SCXA, SCXB
Target/Specificity	This SCXA antibody is generated from rabbits immunized with a KLH conjugated synthetic peptide between 172-201 amino acids from the C-terminal region of human SCXA.
Dilution	IHC-P~~1:100 WB~~1:1000 E~~Use at an assay dependent concentration.
Format	Purified polyclonal antibody supplied in PBS with 0.09% (W/V) sodium azide. This antibody is purified through a protein A column, followed by peptide affinity purification.
Storage	Maintain refrigerated at 2-8°C for up to 2 weeks. For long term storage store at -20°C in small aliquots to prevent freeze-thaw cycles.
Precautions	SCXA Antibody (C-term) is for research use only and not for use in diagnostic or therapeutic procedures.

Protein Information

Name	SCX
Synonyms	BHLHA41, BHLHA48, SCXA, SCXB

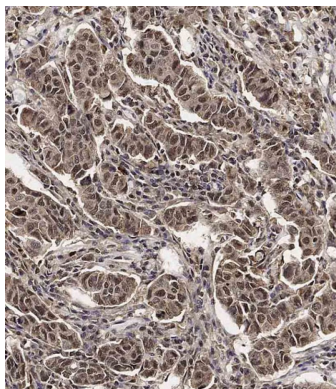
Function Plays an early essential role in mesoderm formation, as well as a later role in formation of somite-derived chondrogenic lineages.

Cellular Location Nucleus {ECO:0000255 | PROSITE-ProRule:PRU00981}.

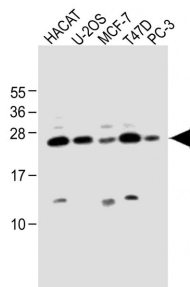
References

Furumatsu, T., et al. Int. J. Biochem. Cell Biol. 42(1):148-156(2010) Liu, Q., et al. Zhonghua Kou Qiang Yi Xue Za Zhi 41(9):556-558(2006) Nusbaum, C., et al. Nature 439(7074):331-335(2006) Schulze-Tanzil, G., et al. Histochem. Cell Biol. 122(3):219-228(2004) Salingcarnboriboon, R., et al. Exp. Cell Res. 287(2):289-300(2003)

Images



Immunohistochemical analysis of AP10439b on paraffin-embedded Human breast carcinoma tissue. Tissue was fixed with formaldehyde at room temperature. Heat induced epitope retrieval was performed by EDTA buffer (pH9. 0). Samples were incubated with primary antibody(1:100) for 1 hour at room temperature. Undiluted CRF Anti-Polyvalent HRP Polymer antibody was used as the secondary antibody.



All lanes : Anti-SCXA Antibody (C-term) at 1:1000 dilution
Lane 1: HACAT whole cell lysate Lane 2: U-2OS whole cell lysate Lane 3: MCF-7 whole cell lysate Lane 4: T47D whole cell lysate Lane 5: PC-3 whole cell lysate Lysates/proteins at 20 µg per lane. Secondary Goat Anti-Rabbit IgG, (H+L), Peroxidase conjugated at 1/10000 dilution. Predicted band size : 22 kDa Blocking/Dilution buffer: 5% NFDM/TBST.

Citations

- [Transient scleraxis overexpression combined with cyclic strain enhances ligamentous differentiation.](#)
- [Retinoic acid receptor signaling preserves tendon stem cell characteristics and prevents spontaneous differentiation in vitro.](#)
- [Conversion of human bone marrow-derived mesenchymal stem cells into tendon progenitor cells by ectopic expression of scleraxis.](#)

Please note: All products are 'FOR RESEARCH USE ONLY. NOT FOR USE IN DIAGNOSTIC OR THERAPEUTIC PROCEDURES'.