

RABGAP1 Antibody (N-term)

Affinity Purified Rabbit Polyclonal Antibody (Pab)

Catalog # AP10460a

Product Information

Application	WB, FC, E
Primary Accession	Q9Y3P9
Other Accession	A2AWA9 , NP_036329.3
Reactivity	Human
Predicted	Mouse
Host	Rabbit
Clonality	Polyclonal
Isotype	Rabbit IgG
Clone Names	RB28069
Calculated MW	121737
Antigen Region	14-43

Additional Information

Gene ID	23637
Other Names	Rab GTPase-activating protein 1, GAP and centrosome-associated protein, Rab6 GTPase-activating protein GAPCenA, RABGAP1
Target/Specificity	This RABGAP1 antibody is generated from rabbits immunized with a KLH conjugated synthetic peptide between 14-43 amino acids from the N-terminal region of human RABGAP1.
Dilution	WB~~1:1000 FC~~1:10~50 E~~Use at an assay dependent concentration.
Format	Purified polyclonal antibody supplied in PBS with 0.09% (W/V) sodium azide. This antibody is purified through a protein A column, followed by peptide affinity purification.
Storage	Maintain refrigerated at 2-8°C for up to 2 weeks. For long term storage store at -20°C in small aliquots to prevent freeze-thaw cycles.
Precautions	RABGAP1 Antibody (N-term) is for research use only and not for use in diagnostic or therapeutic procedures.

Protein Information

Name	RABGAP1
Function	May act as a GTPase-activating protein of RAB6A. May play a role in microtubule nucleation by centrosome. May participate in a RAB6A-mediated

pathway involved in the metaphase-anaphase transition.

Cellular Location

Cytoplasm, cytosol. Cytoplasm, cytoskeleton, microtubule organizing center, centrosome. Note=Predominantly cytosolic but also associated with the centrosome.

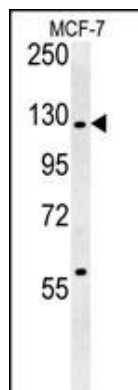
Background

RABGAP1 may act as a GTPase-activating protein of RAB6A and play a role in microtubule nucleation by centrosome. It may participate in a RAB6A-mediated pathway involved in the metaphase-anaphase transition.

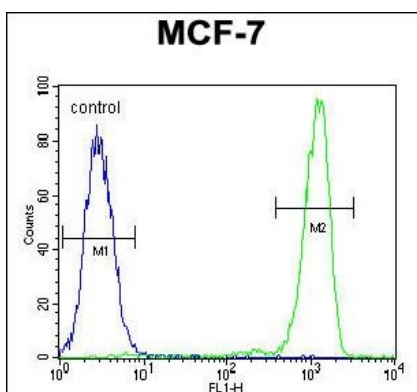
References

Rose, J.E., et al. Mol. Med. 16 (7-8), 247-253 (2010) :
Ishibashi, K., et al. Genes Cells 14(1):41-52(2009)
Echard, A., et al. Mol. Biol. Cell 11(11):3819-3833(2000)
Opdam, F.J., et al. J. Cell. Sci. 113 (PT 15), 2725-2735 (2000) :
Cuif, M.H., et al. EMBO J. 18(7):1772-1782(1999)

Images



RABGAP1 Antibody (N-term) (Cat. #AP10460a) western blot analysis in MCF-7 cell line lysates (35ug/lane). This demonstrates the RABGAP1 antibody detected the RABGAP1 protein (arrow).



RABGAP1 Antibody (N-term) (Cat. #AP10460a) flow cytometric analysis of MCF-7 cells (right histogram) compared to a negative control cell (left histogram). FITC-conjugated goat-anti-rabbit secondary antibodies were used for the analysis.

Please note: All products are 'FOR RESEARCH USE ONLY. NOT FOR USE IN DIAGNOSTIC OR THERAPEUTIC PROCEDURES'.