

CLIC6 Antibody (Center)

Affinity Purified Rabbit Polyclonal Antibody (Pab)

Catalog # AP10474c

Product Information

Application	WB, IHC-P, FC, E
Primary Accession	Q96NY7
Other Accession	Q811Q2 , Q8BHB9 , NP_444507.1
Reactivity	Human
Predicted	Mouse, Rat
Host	Rabbit
Clonality	Polyclonal
Isotype	Rabbit IgG
Clone Names	RB23443
Calculated MW	73012
Antigen Region	539-565

Additional Information

Gene ID	54102
Other Names	Chloride intracellular channel protein 6, Parchorin, CLIC6, CLIC1L
Target/Specificity	This CLIC6 antibody is generated from rabbits immunized with a KLH conjugated synthetic peptide between 539-565 amino acids from the Central region of human CLIC6.
Dilution	WB~~1:1000 IHC-P~~1:100~500 FC~~1:10~50 E~~Use at an assay dependent concentration.
Format	Purified polyclonal antibody supplied in PBS with 0.09% (W/V) sodium azide. This antibody is purified through a protein A column, followed by peptide affinity purification.
Storage	Maintain refrigerated at 2-8°C for up to 2 weeks. For long term storage store at -20°C in small aliquots to prevent freeze-thaw cycles.
Precautions	CLIC6 Antibody (Center) is for research use only and not for use in diagnostic or therapeutic procedures.

Protein Information

Name	CLIC6 {ECO:0000303 PubMed:37838179, ECO:0000312 HGNC:HGNC:2065}
Function	In the soluble state, catalyzes glutaredoxin-like thiol disulfide exchange reactions with reduced glutathione as electron donor (By similarity). Can

insert into membranes and form voltage-dependent chloride-selective channels. The channel opens upon membrane depolarization at positive voltages and closes at negative membrane voltages (PubMed:[37838179](#)). May play a critical role in water-secreting cells, possibly through the regulation of chloride ion transport (By similarity).

Cellular Location

Cytoplasm. Cell membrane; Single-pass membrane protein
Note=Predominantly cytoplasmic. Upon chloride ion efflux from the cell, it is translocated to the plasma membrane (By similarity)

Tissue Location

Expressed in brain, placenta, pancreas, liver, lung, heart, kidney, liver, spleen, soleus muscle, and brown fat

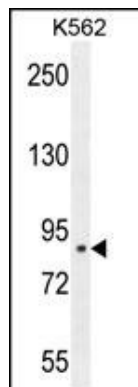
Background

CLIC6 is a member of the chloride intracellular channel family of proteins. The gene is part of a large triplicated region found on chromosomes 1, 6, and 21. An alternatively spliced transcript variant has been described, but its biological validity has not been determined.

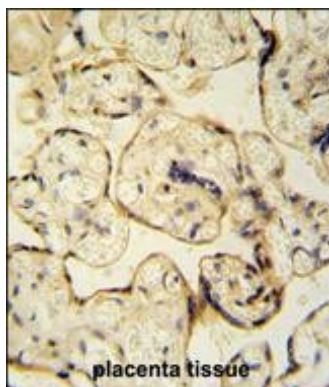
References

Wheeler, H.E., et al. PLoS Genet. 5 (10), E1000685 (2009) :
Friedli, M., et al. Gene 320, 31-40 (2003) :
Strippoli, P., et al. Mamm. Genome 13(8):456-462(2002)
Scanlan, M.J., et al. Cancer Immun. 1, 4 (2001) :

Images

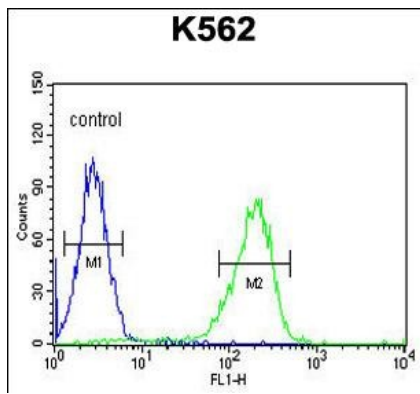


CLIC6 Antibody (Center) (Cat. #AP10474c) western blot analysis in K562 cell line lysates (35ug/lane). This demonstrates the CLIC6 antibody detected the CLIC6 protein (arrow).



CLIC6 antibody (Center) (Cat. #AP10474c) immunohistochemistry analysis in formalin fixed and paraffin embedded human placenta tissue followed by peroxidase conjugation of the secondary antibody and DAB staining. This data demonstrates the use of the CLIC6 antibody (Center) for immunohistochemistry. Clinical relevance has not been evaluated.

CLIC6 Antibody (Center) (Cat. #AP10474c) flow cytometric analysis of K562 cells (right histogram) compared to a negative control cell (left histogram). FITC-conjugated



goat-anti-rabbit secondary antibodies were used for the analysis.

Please note: All products are 'FOR RESEARCH USE ONLY. NOT FOR USE IN DIAGNOSTIC OR THERAPEUTIC PROCEDURES'.