

DEM1 Antibody (Center)

Affinity Purified Rabbit Polyclonal Antibody (Pab)

Catalog # AP10478c

Product Information

Application	WB, FC, E
Primary Accession	Q9H790
Other Accession	NP_073611.1
Reactivity	Human, Hamster, Rat, Mouse
Host	Rabbit
Clonality	Polyclonal
Isotype	Rabbit IgG
Clone Names	RB28545
Calculated MW	41816
Antigen Region	166-193

Additional Information

Gene ID	64789
Other Names	Exonuclease V, Exo V, hExo5, 31--, Defects in morphology protein 1 homolog, EXO5, C1orf176, DEM1
Target/Specificity	This DEM1 antibody is generated from rabbits immunized with a KLH conjugated synthetic peptide between 166-193 amino acids from the Central region of human DEM1.
Dilution	WB~~1:1000 FC~~1:10~50 E~~Use at an assay dependent concentration.
Format	Purified polyclonal antibody supplied in PBS with 0.05% (V/V) Proclin 300. This antibody is prepared by Saturated Ammonium Sulfate (SAS) precipitation followed by dialysis against PBS.
Storage	Maintain refrigerated at 2-8°C for up to 2 weeks. For long term storage store at -20°C in small aliquots to prevent freeze-thaw cycles.
Precautions	DEM1 Antibody (Center) is for research use only and not for use in diagnostic or therapeutic procedures.

Protein Information

Name	EXO5
Synonyms	C1orf176, DEM1
Function	Single-stranded DNA (ssDNA) bidirectional exonuclease involved in DNA

repair. Probably involved in DNA repair following ultraviolet (UV) irradiation and interstrand cross-links (ICLs) damage. Has both 5'-3' and 3'-5' exonuclease activities with a strong preference for 5'-ends. Acts as a sliding exonuclease that loads at ssDNA ends and then slides along the ssDNA prior to cutting; however the sliding and the 3'-5' exonuclease activities are abolished upon binding to the replication protein A (RPA) complex that enforces 5'- directionality activity.

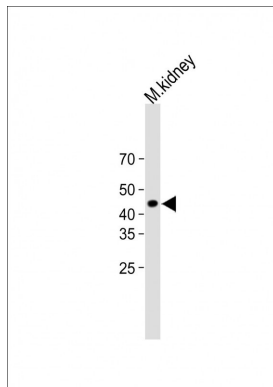
Cellular Location

Nucleus. Cytoplasm, cytosol. Note=Localizes to repair foci in response to DNA damage

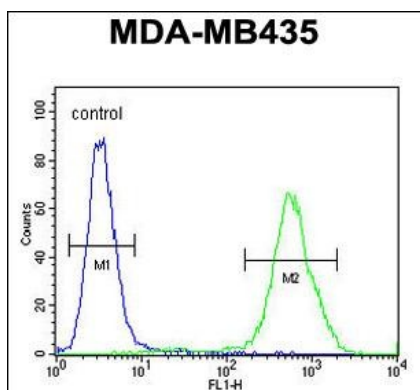
References

Lamesch, P., et al. Genomics 89(3):307-315(2007)
 Beausoleil, S.A., et al. Proc. Natl. Acad. Sci. U.S.A. 101(33):12130-12135(2004)
 Beausoleil, S.A., et al. Proc. Natl. Acad. Sci. U.S.A. 101(33):12130-12135(2004)

Images



All lanes : Anti-DEM1 Antibody (Center) at 1:1000 dilution
 Lane 1: M. kidney whole cell lysate Lysates/proteins at 20 µg per lane. Secondary Goat Anti-Rabbit IgG, (H+L), Peroxidase conjugated (ASP1615) at 1/15000 dilution.
 Observed band size : 42kDa Blocking/Dilution buffer: 5% NFDM/TBST.



DEM1 Antibody (Center) (Cat. #AP10478c) flow cytometric analysis of MDA-MB435 cells (right histogram) compared to a negative control cell (left histogram). FITC-conjugated goat-anti-rabbit secondary antibodies were used for the analysis.

Please note: All products are 'FOR RESEARCH USE ONLY. NOT FOR USE IN DIAGNOSTIC OR THERAPEUTIC PROCEDURES'.