

# GNA15 Antibody (C-term)

Affinity Purified Rabbit Polyclonal Antibody (Pab)

Catalog # AP10483b

## Product Information

---

<b>Application</b>	WB, E
<b>Primary Accession</b>	<a href="#">P30679</a>
<b>Other Accession</b>	<a href="#">Q9TU29</a> , <a href="#">NP_002059.2</a>
<b>Reactivity</b>	Human, Mouse
<b>Predicted</b>	Rabbit
<b>Host</b>	Rabbit
<b>Clonality</b>	Polyclonal
<b>Isotype</b>	Rabbit IgG
<b>Clone Names</b>	RB24619
<b>Calculated MW</b>	43508
<b>Antigen Region</b>	333-361

## Additional Information

---

<b>Gene ID</b>	2769
<b>Other Names</b>	Guanine nucleotide-binding protein subunit alpha-15, G alpha-15, G-protein subunit alpha-15, Epididymis tissue protein Li 17E, Guanine nucleotide-binding protein subunit alpha-16, G alpha-16, G-protein subunit alpha-16, GNA15, GNA16
<b>Target/Specificity</b>	This GNA15 antibody is generated from rabbits immunized with a KLH conjugated synthetic peptide between 333-361 amino acids from the C-terminal region of human GNA15.
<b>Dilution</b>	WB~~1:1000 E~~Use at an assay dependent concentration.
<b>Format</b>	Purified polyclonal antibody supplied in PBS with 0.09% (W/V) sodium azide. This antibody is purified through a protein A column, followed by peptide affinity purification.
<b>Storage</b>	Maintain refrigerated at 2-8°C for up to 2 weeks. For long term storage store at -20°C in small aliquots to prevent freeze-thaw cycles.
<b>Precautions</b>	GNA15 Antibody (C-term) is for research use only and not for use in diagnostic or therapeutic procedures.

## Protein Information

---

<b>Name</b>	GNA15
-------------	-------

<b>Synonyms</b>	GNA16
<b>Function</b>	Guanine nucleotide-binding proteins (G proteins) are involved as modulators or transducers in various transmembrane signaling systems.
<b>Tissue Location</b>	Specifically expressed in hematopoietic cells. Expressed in epididymis (at protein level)

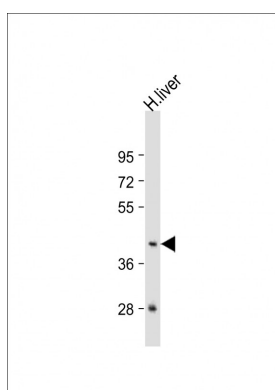
## Background

Guanine nucleotide-binding proteins (G proteins) are involved as modulators or transducers in various transmembrane signaling systems.

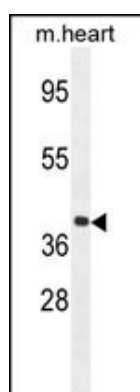
## References

Smith, N.L., et al. Circ Cardiovasc Genet 3(3):256-266(2010)  
Lee, M.M., et al. J. Leukoc. Biol. 86(6):1319-1329(2009)  
Lo, R.K., et al. Cell. Signal. 20(11):2095-2106(2008)  
Luttrell, L.M. Mol. Biotechnol. 39(3):239-264(2008)  
Lamesch, P., et al. Genomics 89(3):307-315(2007)

## Images



Anti-GNA15 Antibody (C-term) at 1:1000 dilution + human liver lysate Lysates/proteins at 20 µg per lane. Secondary Goat Anti-Rabbit IgG, (H+L), Peroxidase conjugated at 1/10000 dilution. Predicted band size : 44 kDa  
Blocking/Dilution buffer: 5% NFDM/TBST.



GNA15 Antibody (C-term) (Cat. #AP10483b) western blot analysis in mouse heart tissue lysates (35ug/lane). This demonstrates the GNA15 antibody detected the GNA15 protein (arrow).

Please note: All products are 'FOR RESEARCH USE ONLY. NOT FOR USE IN DIAGNOSTIC OR THERAPEUTIC PROCEDURES'.