

# ISCA2 Antibody (Center)

Affinity Purified Rabbit Polyclonal Antibody (Pab)

Catalog # AP10491c

## Product Information

---

<b>Application</b>	WB, IHC-P, E
<b>Primary Accession</b>	<a href="#">Q86U28</a>
<b>Other Accession</b>	<a href="#">Q9DCB8</a> , <a href="#">NP_919255.2</a>
<b>Reactivity</b>	Human, Mouse
<b>Host</b>	Rabbit
<b>Clonality</b>	Polyclonal
<b>Isotype</b>	Rabbit IgG
<b>Clone Names</b>	RB27637
<b>Calculated MW</b>	16476
<b>Antigen Region</b>	72-101

## Additional Information

---

<b>Gene ID</b>	122961
<b>Other Names</b>	Iron-sulfur cluster assembly 2 homolog, mitochondrial, HESB-like domain-containing protein 1, ISCA2, HBLD1
<b>Target/Specificity</b>	This ISCA2 antibody is generated from rabbits immunized with a KLH conjugated synthetic peptide between 72-101 amino acids from the Central region of human ISCA2.
<b>Dilution</b>	WB~~1:1000 IHC-P~~1:100~500 E~~Use at an assay dependent concentration.
<b>Format</b>	Purified polyclonal antibody supplied in PBS with 0.05% (V/V) Proclin 300. This antibody is prepared by Saturated Ammonium Sulfate (SAS) precipitation followed by dialysis against PBS.
<b>Storage</b>	Maintain refrigerated at 2-8°C for up to 2 weeks. For long term storage store at -20°C in small aliquots to prevent freeze-thaw cycles.
<b>Precautions</b>	ISCA2 Antibody (Center) is for research use only and not for use in diagnostic or therapeutic procedures.

## Protein Information

---

<b>Name</b>	ISCA2
<b>Synonyms</b>	HBLD1
<b>Function</b>	Involved in the maturation of mitochondrial 4Fe-4S proteins functioning late

in the iron-sulfur cluster assembly pathway. May be involved in the binding of an intermediate of Fe/S cluster assembly.

## Cellular Location

Mitochondrion.

## Background

---

ISCA2 is involved in the assembly of mitochondrial iron-sulfur proteins. Probably involved in the binding of an intermediate of Fe/S cluster assembly (By similarity).

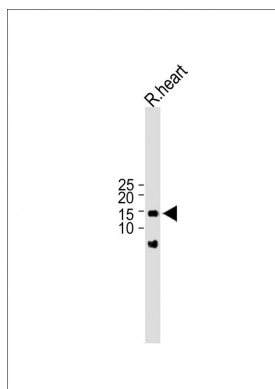
## References

---

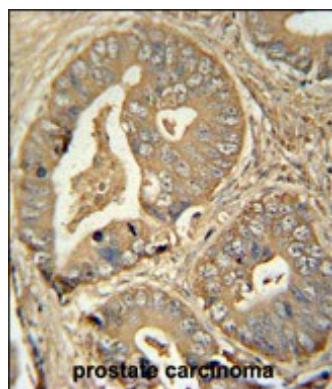
Bailey, S.D., et al. Diabetes Care (2010) In press :  
Talmud, P.J., et al. Am. J. Hum. Genet. 85(5):628-642(2009)

## Images

---



All lanes : Anti- ISCA2 Antibody (Center) Antibody at 1:1000 dilution Lane 1:Rat heart lysate Lysates/proteins at 20 µg per lane. Secondary Goat Anti-Rabbit IgG, (H+L), Peroxidase conjugated (ASP1615) at 1/15000 dilution. Observed band size : 16kDa Blocking/Dilution buffer: 5% NFDM/TBST.



ISCA2 antibody (Center) (Cat. #AP10491c) immunohistochemistry analysis in formalin fixed and paraffin embedded human prostate carcinoma followed by peroxidase conjugation of the secondary antibody and DAB staining. This data demonstrates the use of the ISCA2 antibody (Center) for immunohistochemistry. Clinical relevance has not been evaluated.

Please note: All products are 'FOR RESEARCH USE ONLY. NOT FOR USE IN DIAGNOSTIC OR THERAPEUTIC PROCEDURES'.