

## GRINA Antibody (Center)

Affinity Purified Rabbit Polyclonal Antibody (Pab)

Catalog # AP10492c

### Product Information

---

<b>Application</b>	WB, E
<b>Primary Accession</b>	<a href="#">Q7Z429</a>
<b>Other Accession</b>	<a href="#">Q6P6R0</a> , <a href="#">Q9ESF4</a> , <a href="#">NP_000828.1</a> , <a href="#">NP_001009184.1</a>
<b>Reactivity</b>	Human
<b>Predicted</b>	Mouse, Rat
<b>Host</b>	Rabbit
<b>Clonality</b>	Polyclonal
<b>Isotype</b>	Rabbit IgG
<b>Clone Names</b>	RB23490
<b>Calculated MW</b>	41203
<b>Antigen Region</b>	117-146

### Additional Information

---

<b>Gene ID</b>	2907
<b>Other Names</b>	Protein lifeguard 1, Glutamate [NMDA] receptor-associated protein 1, NMDA receptor glutamate-binding subunit, Putative MAPK-activating protein PM02, Transmembrane BAX inhibitor motif-containing protein 3, GRINA, LFG1, NMDARA1, TMBIM3
<b>Target/Specificity</b>	This GRINA antibody is generated from rabbits immunized with a KLH conjugated synthetic peptide between 117-146 amino acids from the Central region of human GRINA.
<b>Dilution</b>	WB~~1:1000 E~~Use at an assay dependent concentration.
<b>Format</b>	Purified polyclonal antibody supplied in PBS with 0.09% (W/V) sodium azide. This antibody is purified through a protein A column, followed by peptide affinity purification.
<b>Storage</b>	Maintain refrigerated at 2-8°C for up to 2 weeks. For long term storage store at -20°C in small aliquots to prevent freeze-thaw cycles.
<b>Precautions</b>	GRINA Antibody (Center) is for research use only and not for use in diagnostic or therapeutic procedures.

### Protein Information

---

<b>Name</b>	GRINA
-------------	-------

<b>Synonyms</b>	LFG1, NMDARA1, TMBIM3
<b>Function</b>	Potential apoptotic regulator.
<b>Cellular Location</b>	Membrane; Multi-pass membrane protein

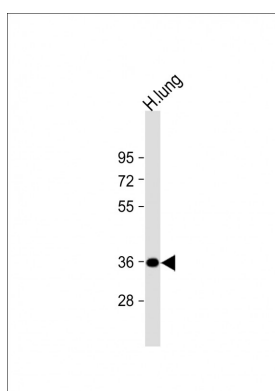
## References

---

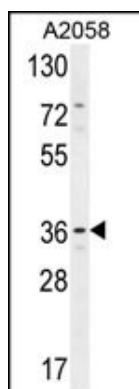
Zhou, J., et al. Comput Biol Chem 32(3):159-162(2008)  
Oh, J.H., et al. Mamm. Genome 16(12):942-954(2005)  
Matsuda, A., et al. Oncogene 22(21):3307-3318(2003)  
Lewis, T.B., et al. Genomics 32(1):131-133(1996)  
Collins, C., et al. Genomics 17(1):237-239(1993)

## Images

---



Anti-GRINA Antibody (Center) at 1:1000 dilution + human lung lysate Lysates/proteins at 20 µg per lane. Secondary Goat Anti-Rabbit IgG, (H+L), Peroxidase conjugated at 1/10000 dilution. Predicted band size : 41 kDa  
Blocking/Dilution buffer: 5% NFDm/TBST.



GRINA Antibody (Center) (Cat. #AP10492c) western blot analysis in A2058 cell line lysates (35ug/lane). This demonstrates the GRINA antibody detected the GRINA protein (arrow).

Please note: All products are 'FOR RESEARCH USE ONLY. NOT FOR USE IN DIAGNOSTIC OR THERAPEUTIC PROCEDURES'.