

WWC3 Antibody (C-term)

Affinity Purified Rabbit Polyclonal Antibody (Pab)

Catalog # AP10525b

Product Information

Application	WB, IHC-P, E
Primary Accession	Q9ULE0
Other Accession	NP_056506.2
Reactivity	Human
Host	Rabbit
Clonality	Polyclonal
Isotype	Rabbit IgG
Clone Names	RB28161
Calculated MW	136649
Antigen Region	1008-1037

Additional Information

Gene ID	55841
Other Names	Protein WWC3, WWC3, KIAA1280
Target/Specificity	This WWC3 antibody is generated from rabbits immunized with a KLH conjugated synthetic peptide between 1008-1037 amino acids from the C-terminal region of human WWC3.
Dilution	WB~~1:1000 IHC-P~~1:100~500 E~~Use at an assay dependent concentration.
Format	Purified polyclonal antibody supplied in PBS with 0.09% (W/V) sodium azide. This antibody is purified through a protein A column, followed by peptide affinity purification.
Storage	Maintain refrigerated at 2-8°C for up to 2 weeks. For long term storage store at -20°C in small aliquots to prevent freeze-thaw cycles.
Precautions	WWC3 Antibody (C-term) is for research use only and not for use in diagnostic or therapeutic procedures.

Protein Information

Name	WWC3 (HGNC:29237)
Synonyms	KIAA1280
Function	Regulator of the Hippo signaling pathway, also known as the Salvador-Warts-Hippo (SWH) pathway. Enhances phosphorylation of LATS1

and YAP1 and negatively regulates cell proliferation and organ growth due to a suppression of the transcriptional activity of YAP1, the major effector of the Hippo pathway.

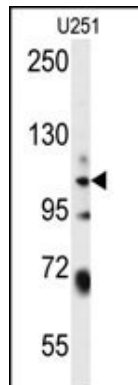
Cellular Location

Cytoplasm, cytosol.

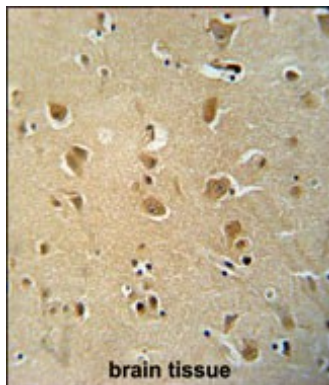
References

Kimura, K., et al. Genome Res. 16(1):55-65(2006)

Images



WWC3 Antibody (C-term) (Cat. #AP10525b) western blot analysis in U251 cell line lysates (35ug/lane). This demonstrates the WWC3 antibody detected the WWC3 protein (arrow).



WWC3 antibody (C-term) (Cat. #AP10525b) immunohistochemistry analysis in formalin fixed and paraffin embedded human brain tissue followed by peroxidase conjugation of the secondary antibody and DAB staining. This data demonstrates the use of the WWC3 antibody (C-term) for immunohistochemistry. Clinical relevance has not been evaluated.

Please note: All products are 'FOR RESEARCH USE ONLY. NOT FOR USE IN DIAGNOSTIC OR THERAPEUTIC PROCEDURES'.