

LRC18 Antibody (C-term)

Affinity Purified Rabbit Polyclonal Antibody (Pab)

Catalog # AP10529b

Product Information

Application	WB, IHC-P, E
Primary Accession	Q8N456
Other Accession	NP_001006940.3
Reactivity	Human, Mouse
Host	Rabbit
Clonality	Polyclonal
Isotype	Rabbit IgG
Clone Names	RB28486
Calculated MW	29737
Antigen Region	149-177

Additional Information

Gene ID	474354
Other Names	Leucine-rich repeat-containing protein 18, LRRC18
Target/Specificity	This LRC18 antibody is generated from rabbits immunized with a KLH conjugated synthetic peptide between 149-177 amino acids from the C-terminal region of human LRC18.
Dilution	WB~~1:1000 IHC-P~~1:100~500 E~~Use at an assay dependent concentration.
Format	Purified polyclonal antibody supplied in PBS with 0.09% (W/V) sodium azide. This antibody is purified through a protein A column, followed by peptide affinity purification.
Storage	Maintain refrigerated at 2-8°C for up to 2 weeks. For long term storage store at -20°C in small aliquots to prevent freeze-thaw cycles.
Precautions	LRC18 Antibody (C-term) is for research use only and not for use in diagnostic or therapeutic procedures.

Protein Information

Name	LRRC18
Function	May be involved in the regulation of spermatogenesis and sperm maturation.
Cellular Location	Cytoplasm.

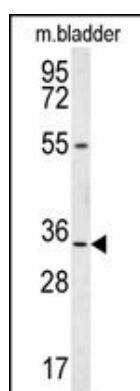
Background

May be involved in the regulation of spermatogenesis and sperm maturation (By similarity).

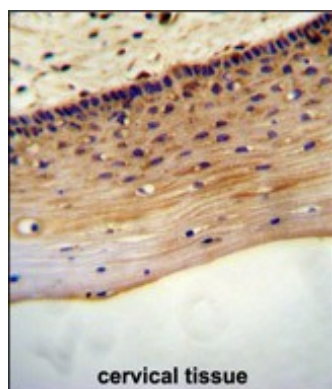
References

Han, J.W., et al. Nat. Genet. 41(11):1234-1237(2009)
Lamesch, P., et al. Genomics 89(3):307-315(2007)
O'Donnell, C.J., et al. BMC Med. Genet. 8 SUPPL 1, S4 (2007) :
Nie, D.S., et al. Biochem. Biophys. Res. Commun. 328(4):1010-1018(2005)
Clark, H.F., et al. Genome Res. 13(10):2265-2270(2003)

Images



LRC18 Antibody (C-term) (Cat. #AP10529b) western blot analysis in mouse bladder tissue lysates (35ug/lane). This demonstrates the LRC18 antibody detected the LRC18 protein (arrow).



LRC18 antibody (C-term) (Cat. #AP10529b) immunohistochemistry analysis in formalin fixed and paraffin embedded human cervical tissue followed by peroxidase conjugation of the secondary antibody and DAB staining. This data demonstrates the use of the LRC18 antibody (C-term) for immunohistochemistry. Clinical relevance has not been evaluated.

Please note: All products are 'FOR RESEARCH USE ONLY. NOT FOR USE IN DIAGNOSTIC OR THERAPEUTIC PROCEDURES'.