

LY6G6C Antibody (C-term)

Affinity Purified Rabbit Polyclonal Antibody (Pab)

Catalog # AP10539b

Product Information

Application	WB, IHC-P, E
Primary Accession	O95867
Other Accession	NP_079537.1
Reactivity	Human
Host	Rabbit
Clonality	Polyclonal
Isotype	Rabbit IgG
Clone Names	RB27560
Calculated MW	13821
Antigen Region	62-90

Additional Information

Gene ID	80740
Other Names	Lymphocyte antigen 6 complex locus protein G6c, LY6G6C, C6orf24, G6C, NG24
Target/Specificity	This LY6G6C antibody is generated from rabbits immunized with a KLH conjugated synthetic peptide between 62-90 amino acids from the C-terminal region of human LY6G6C.
Dilution	WB~~1:1000 IHC-P~~1:100~500 E~~Use at an assay dependent concentration.
Format	Purified polyclonal antibody supplied in PBS with 0.09% (W/V) sodium azide. This antibody is purified through a protein A column, followed by peptide affinity purification.
Storage	Maintain refrigerated at 2-8°C for up to 2 weeks. For long term storage store at -20°C in small aliquots to prevent freeze-thaw cycles.
Precautions	LY6G6C Antibody (C-term) is for research use only and not for use in diagnostic or therapeutic procedures.

Protein Information

Name	LY6G6C
Synonyms	C6orf24, G6C, NG24
Cellular Location	Cell membrane; Lipid-anchor, GPI-anchor

Tissue Location

Highly expressed at the leading edges of cells, on filopodia.

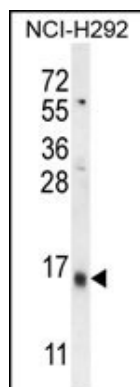
Background

LY6G6C belongs to a cluster of leukocyte antigen-6 (LY6) genes located in the major histocompatibility complex (MHC) class III region on chromosome 6. Members of the LY6 superfamily typically contain 70 to 80 amino acids, including 8 to 10 cysteines. Most LY6 proteins are attached to the cell surface by a glycosylphosphatidylinositol (GPI) anchor that is directly involved in signal transduction (Mallya et al., 2002 [PubMed 12079290]).

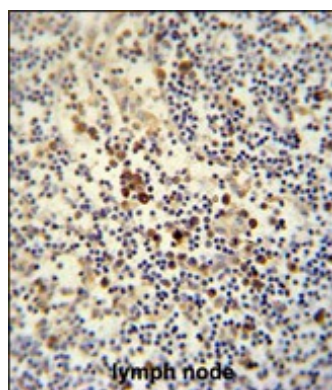
References

Bailey, S.D., et al. Diabetes Care (2010) In press :
Talmud, P.J., et al. Am. J. Hum. Genet. 85(5):628-642(2009)
Barcellos, L.F., et al. PLoS Genet. 5 (10), E1000696 (2009) :
Xie, T., et al. Genome Res. 13(12):2621-2636(2003)
Mallya, M., et al. Genomics 80(1):113-123(2002)

Images



LY6G6C Antibody (C-term) (Cat. #AP10539b) western blot analysis in NCI-H292 cell line lysates (35ug/lane). This demonstrates the LY6G6C antibody detected the LY6G6C protein (arrow).



LY6G6C antibody (C-term) (Cat. #AP10539b) immunohistochemistry analysis in formalin fixed and paraffin embedded human lymph node followed by peroxidase conjugation of the secondary antibody and DAB staining. This data demonstrates the use of the LY6G6C antibody (C-term) for immunohistochemistry. Clinical relevance has not been evaluated.

Please note: All products are 'FOR RESEARCH USE ONLY. NOT FOR USE IN DIAGNOSTIC OR THERAPEUTIC PROCEDURES'.