

OR52A1 Antibody (C-term)

Affinity Purified Rabbit Polyclonal Antibody (Pab)

Catalog # AP10540b

Product Information

Application	WB, FC, E
Primary Accession	Q9UKL2
Other Accession	Q9H2C5 , NP_036507.2
Reactivity	Human
Host	Rabbit
Clonality	Polyclonal
Isotype	Rabbit IgG
Clone Names	RB27996
Calculated MW	35322
Antigen Region	248-276

Additional Information

Gene ID	23538
Other Names	Olfactory receptor 52A1, HPFH1OR, Odorant receptor HOR3'beta4, Olfactory receptor OR11-319, OR52A1
Target/Specificity	This OR52A1 antibody is generated from rabbits immunized with a KLH conjugated synthetic peptide between 248-276 amino acids from the C-terminal region of human OR52A1.
Dilution	WB~~1:1000 FC~~1:10~50 E~~Use at an assay dependent concentration.
Format	Purified polyclonal antibody supplied in PBS with 0.09% (W/V) sodium azide. This antibody is purified through a protein A column, followed by peptide affinity purification.
Storage	Maintain refrigerated at 2-8°C for up to 2 weeks. For long term storage store at -20°C in small aliquots to prevent freeze-thaw cycles.
Precautions	OR52A1 Antibody (C-term) is for research use only and not for use in diagnostic or therapeutic procedures.

Protein Information

Name	OR52A1
Function	Odorant receptor.
Cellular Location	Cell membrane; Multi-pass membrane protein.

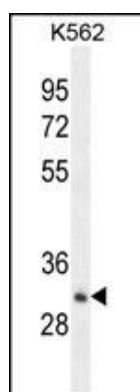
Background

Olfactory receptors interact with odorant molecules in the nose, to initiate a neuronal response that triggers the perception of a smell. The olfactory receptor proteins are members of a large family of G-protein-coupled receptors (GPCR) arising from single coding-exon genes. Olfactory receptors share a 7-transmembrane domain structure with many neurotransmitter and hormone receptors and are responsible for the recognition and G protein-mediated transduction of odorant signals. The olfactory receptor gene family is the largest in the genome. The nomenclature assigned to the olfactory receptor genes and proteins for this organism is independent of other organisms.

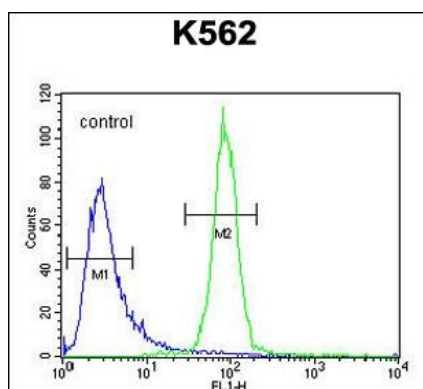
References

Joslyn, G., et al. Alcohol. Clin. Exp. Res. 34(5):800-812(2010)
Malnic, B., et al. Proc. Natl. Acad. Sci. U.S.A. 101(8):2584-2589(2004)
Bulger, M., et al. Proc. Natl. Acad. Sci. U.S.A. 97(26):14560-14565(2000)
Feingold, E.A., et al. Genomics 61(1):15-23(1999)

Images



OR52A1 Antibody (C-term) (Cat. #AP10540b) western blot analysis in K562 cell line lysates (35ug/lane). This demonstrates the OR52A1 antibody detected the OR52A1 protein (arrow).



OR52A1 Antibody (C-term) (Cat. #AP10540b) flow cytometric analysis of K562 cells (right histogram) compared to a negative control cell (left histogram). FITC-conjugated goat-anti-rabbit secondary antibodies were used for the analysis.

Please note: All products are 'FOR RESEARCH USE ONLY. NOT FOR USE IN DIAGNOSTIC OR THERAPEUTIC PROCEDURES'.