

WBSCR27 Antibody (N-term)

Affinity Purified Rabbit Polyclonal Antibody (Pab)

Catalog # AP10548a

Product Information

Application	WB, IHC-P, E
Primary Accession	Q8N6F8
Other Accession	NP_689772.2
Reactivity	Human
Host	Rabbit
Clonality	Polyclonal
Isotype	Rabbit IgG
Clone Names	RB27437
Calculated MW	26522
Antigen Region	5-34

Additional Information

Gene ID	155368
Other Names	Williams-Beuren syndrome chromosomal region 27 protein, WBSCR27
Target/Specificity	This WBSCR27 antibody is generated from rabbits immunized with a KLH conjugated synthetic peptide between 5-34 amino acids from the N-terminal region of human WBSCR27.
Dilution	WB~~1:1000 IHC-P~~1:100~500 E~~Use at an assay dependent concentration.
Format	Purified polyclonal antibody supplied in PBS with 0.09% (W/V) sodium azide. This antibody is purified through a protein A column, followed by peptide affinity purification.
Storage	Maintain refrigerated at 2-8°C for up to 2 weeks. For long term storage store at -20°C in small aliquots to prevent freeze-thaw cycles.
Precautions	WBSCR27 Antibody (N-term) is for research use only and not for use in diagnostic or therapeutic procedures.

Protein Information

Name	METTL27 (HGNC:19068)
-------------	--

Background

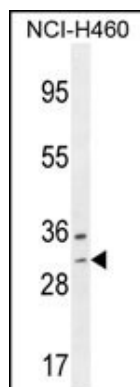
WBSCR27 encodes a protein belonging to ubiE/COQ5 methyltransferase family. The gene is deleted in

Williams syndrome, a multisystem developmental disorder caused by the deletion of contiguous genes at 7q11.22-q11.23.

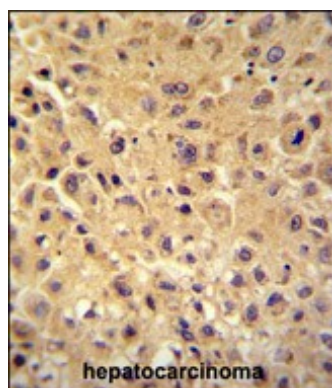
References

Micale, L., et al. Eur. J. Hum. Genet. 16(9):1038-1049(2008)
Hahn, Y., et al. Bioinformatics 21 SUPPL 1, I186-I194 (2005) :

Images



WBSCR27 Antibody (N-term) (Cat. #AP10548a) western blot analysis in NCI-H460 cell line lysates (35ug/lane). This demonstrates the WBSCR27 antibody detected the WBSCR27 protein (arrow).



WBSCR27 antibody (N-term) (Cat. #AP10548a) immunohistochemistry analysis in formalin fixed and paraffin embedded human hepatocarcinoma followed by peroxidase conjugation of the secondary antibody and DAB staining. This data demonstrates the use of the WBSCR27 antibody (N-term) for immunohistochemistry. Clinical relevance has not been evaluated.

Please note: All products are 'FOR RESEARCH USE ONLY. NOT FOR USE IN DIAGNOSTIC OR THERAPEUTIC PROCEDURES'.