

TTC16 Antibody (N-term)

Affinity Purified Rabbit Polyclonal Antibody (Pab)

Catalog # AP10559a

Product Information

Application	IHC-P, FC, WB, E
Primary Accession	Q8NEE8
Other Accession	NP_659402.1
Reactivity	Human
Host	Rabbit
Clonality	Polyclonal
Isotype	Rabbit IgG
Clone Names	RB27950
Calculated MW	98309
Antigen Region	1-30

Additional Information

Gene ID	158248
Other Names	Tetratricopeptide repeat protein 16, TPR repeat protein 16, TTC16
Target/Specificity	This TTC16 antibody is generated from rabbits immunized with a KLH conjugated synthetic peptide between 1-30 amino acids from the N-terminal region of human TTC16.
Dilution	IHC-P~~1:100~500 FC~~1:10~50 WB~~1:1000 E~~Use at an assay dependent concentration.
Format	Purified polyclonal antibody supplied in PBS with 0.09% (W/V) sodium azide. This antibody is purified through a protein A column, followed by peptide affinity purification.
Storage	Maintain refrigerated at 2-8°C for up to 2 weeks. For long term storage store at -20°C in small aliquots to prevent freeze-thaw cycles.
Precautions	TTC16 Antibody (N-term) is for research use only and not for use in diagnostic or therapeutic procedures.

Protein Information

Name	TTC16
-------------	-------

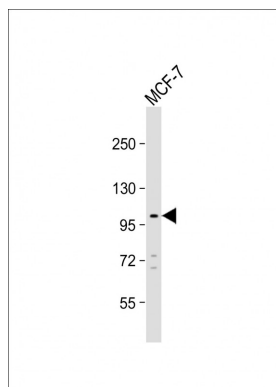
Background

TTC16 contains 8 TPR repeats. The exact function of TTC16 remains unknown.

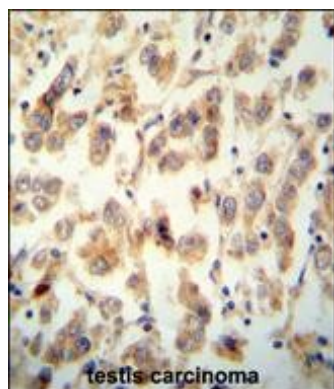
References

Humphray, S.J., et al. Nature 429(6990):369-374(2004)

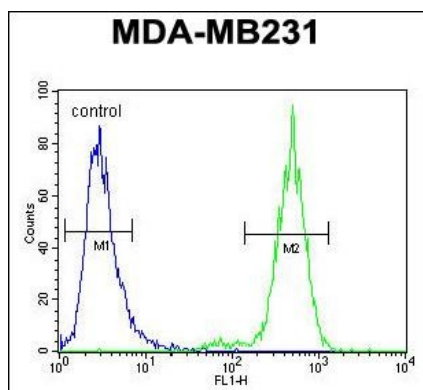
Images



Anti-TTC16 Antibody (N-term) at 1:1000 dilution + MCF-7 whole cell lysate Lysates/proteins at 20 µg per lane. Secondary Goat Anti-Rabbit IgG, (H+L), Peroxidase conjugated at 1/10000 dilution. Predicted band size : 98 kDa Blocking/Dilution buffer: 5% NFDM/TBST.



TTC16 antibody (N-term) (Cat. #AP10559a) immunohistochemistry analysis in formalin fixed and paraffin embedded human testis carcinoma followed by peroxidase conjugation of the secondary antibody and DAB staining. This data demonstrates the use of the TTC16 antibody (N-term) for immunohistochemistry. Clinical relevance has not been evaluated.



TTC16 Antibody (N-term) (Cat. #AP10559a) flow cytometric analysis of MDA-MB231 cells (right histogram) compared to a negative control cell (left histogram). FITC-conjugated goat-anti-rabbit secondary antibodies were used for the analysis.

Please note: All products are 'FOR RESEARCH USE ONLY. NOT FOR USE IN DIAGNOSTIC OR THERAPEUTIC PROCEDURES'.