

# DMRTC1 Antibody (N-term)

Affinity Purified Rabbit Polyclonal Antibody (Pab)

Catalog # AP10566a

## Product Information

---

<b>Application</b>	WB, E
<b>Primary Accession</b>	<a href="#">Q5HYR2</a>
<b>Other Accession</b>	<a href="#">NP_149042.2</a> , <a href="#">NP_001074320.1</a>
<b>Reactivity</b>	Human
<b>Host</b>	Rabbit
<b>Clonality</b>	Polyclonal
<b>Isotype</b>	Rabbit IgG
<b>Clone Names</b>	RB28244
<b>Calculated MW</b>	20139
<b>Antigen Region</b>	6-34

## Additional Information

---

<b>Gene ID</b>	63947;728656
<b>Other Names</b>	Doublesex- and mab-3-related transcription factor C1, DMRTC1
<b>Target/Specificity</b>	This DMRTC1 antibody is generated from rabbits immunized with a KLH conjugated synthetic peptide between 6-34 amino acids from the N-terminal region of human DMRTC1.
<b>Dilution</b>	WB~~1:1000 E~~Use at an assay dependent concentration.
<b>Format</b>	Purified polyclonal antibody supplied in PBS with 0.09% (W/V) sodium azide. This antibody is purified through a protein A column, followed by peptide affinity purification.
<b>Storage</b>	Maintain refrigerated at 2-8°C for up to 2 weeks. For long term storage store at -20°C in small aliquots to prevent freeze-thaw cycles.
<b>Precautions</b>	DMRTC1 Antibody (N-term) is for research use only and not for use in diagnostic or therapeutic procedures.

## Protein Information

---

<b>Name</b>	DMRTC1
<b>Tissue Location</b>	Predominantly expressed in kidney, pancreas, ovary and testis. Detected in brain and in many other tissues

## References

---

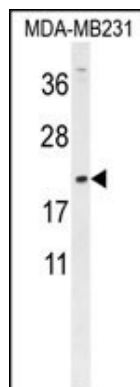
Wang, A.G., et al. Biochem. Biophys. Res. Commun. 345(3):1022-1032(2006)

Ross, M.T., et al. Nature 434(7031):325-337(2005)

Ottolenghi, C., et al. Genomics 79(3):333-343(2002)

## Images

---



DMRTC1 Antibody (N-term) (Cat. #AP10566a) western blot analysis in MDA-MB231 cell line lysates (35ug/lane). This demonstrates the DMRTC1 antibody detected the DMRTC1 protein (arrow).

Please note: All products are 'FOR RESEARCH USE ONLY. NOT FOR USE IN DIAGNOSTIC OR THERAPEUTIC PROCEDURES'.