

GOLGA2L1 Antibody (C-term)

Affinity Purified Rabbit Polyclonal Antibody (Pab)

Catalog # AP10576b

Product Information

Application	WB, FC, E
Primary Accession	Q9HBQ8
Other Accession	NP_060070.1
Reactivity	Human
Host	Rabbit
Clonality	Polyclonal
Isotype	Rabbit IgG
Clone Names	RB27834
Calculated MW	15482
Antigen Region	83-112

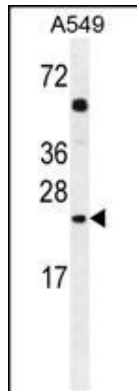
Additional Information

Other Names	Putative golgin subfamily A member 2B, Golgin subfamily A member 2-like protein 1, GOLGA2P5, GOLGA2B, GOLGA2L1
Target/Specificity	This GOLGA2L1 antibody is generated from rabbits immunized with a KLH conjugated synthetic peptide between 83-112 amino acids from the C-terminal region of human GOLGA2L1.
Dilution	WB~~1:1000 FC~~1:10~50 E~~Use at an assay dependent concentration.
Format	Purified polyclonal antibody supplied in PBS with 0.09% (W/V) sodium azide. This antibody is purified through a protein A column, followed by peptide affinity purification.
Storage	Maintain refrigerated at 2-8°C for up to 2 weeks. For long term storage store at -20°C in small aliquots to prevent freeze-thaw cycles.
Precautions	GOLGA2L1 Antibody (C-term) is for research use only and not for use in diagnostic or therapeutic procedures.

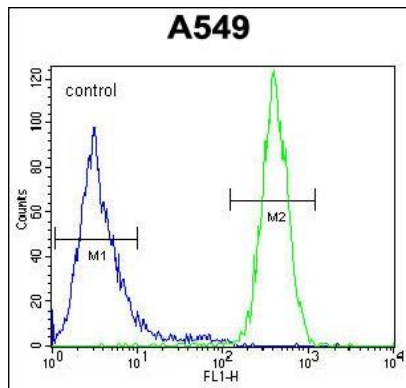
Protein Information

Name	GOLGA2P5
Synonyms	GOLGA2B, GOLGA2L1

Images



GOLGA2L1 Antibody (C-term) (Cat. #AP10576b) western blot analysis in A549 cell line lysates (35ug/lane). This demonstrates the GOLGA2L1 antibody detected the GOLGA2L1 protein (arrow).



GOLGA2L1 Antibody (C-term) (Cat. #AP10576b) flow cytometric analysis of A549 cells (right histogram) compared to a negative control cell (left histogram). FITC-conjugated goat-anti-rabbit secondary antibodies were used for the analysis.

Please note: All products are 'FOR RESEARCH USE ONLY. NOT FOR USE IN DIAGNOSTIC OR THERAPEUTIC PROCEDURES'.