

# SPATA2L Antibody (Center)

Affinity Purified Rabbit Polyclonal Antibody (Pab)

Catalog # AP10584c

## Product Information

---

Application	WB, E
Primary Accession	<a href="#">Q8IUW3</a>
Other Accession	<a href="#">NP_689552.2</a>
Reactivity	Human
Host	Rabbit
Clonality	Polyclonal
Isotype	Rabbit IgG
Clone Names	RB27860
Calculated MW	46179
Antigen Region	206-235

## Additional Information

---

Gene ID	124044
Other Names	Spermatogenesis-associated protein 2-like protein, SPATA2-like protein, SPATA2L, C16orf76
Target/Specificity	This SPATA2L antibody is generated from rabbits immunized with a KLH conjugated synthetic peptide between 206-235 amino acids from the Central region of human SPATA2L.
Dilution	WB~~1:1000 E~~Use at an assay dependent concentration.
Format	Purified polyclonal antibody supplied in PBS with 0.09% (W/V) sodium azide. This antibody is purified through a protein A column, followed by peptide affinity purification.
Storage	Maintain refrigerated at 2-8°C for up to 2 weeks. For long term storage store at -20°C in small aliquots to prevent freeze-thaw cycles.
Precautions	SPATA2L Antibody (Center) is for research use only and not for use in diagnostic or therapeutic procedures.

## Protein Information

---

Name	SPATA2L ( <a href="#">HGNC:28393</a> )
------	--

## Background

---

SPATA2L belongs to the SPATA2 family. The exact function of SPATA2L is not known. There are two different isoforms.

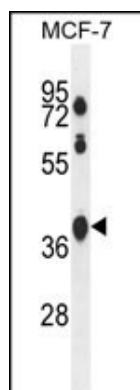
## References

---

Lamesch, P., et al. Genomics 89(3):307-315(2007)

## Images

---



SPATA2L Antibody (Center) (Cat. #AP10584c) western blot analysis in MCF-7 cell line lysates (35ug/lane). This demonstrates the SPATA2L antibody detected the SPATA2L protein (arrow).

Please note: All products are 'FOR RESEARCH USE ONLY. NOT FOR USE IN DIAGNOSTIC OR THERAPEUTIC PROCEDURES'.