

LRRC34 Antibody (Center)

Affinity Purified Rabbit Polyclonal Antibody (Pab)

Catalog # AP10603c

Product Information

Application	WB, E
Primary Accession	Q8IZ02
Other Accession	NP_001166250.1 , NP_699184.2
Reactivity	Human, Rat, Mouse
Host	Rabbit
Clonality	Polyclonal
Isotype	Rabbit IgG
Clone Names	RB27929
Calculated MW	51277
Antigen Region	154-182

Additional Information

Gene ID	151827
Other Names	Leucine-rich repeat-containing protein 34, LRRC34
Target/Specificity	This LRRC34 antibody is generated from rabbits immunized with a KLH conjugated synthetic peptide between 154-182 amino acids from the Central region of human LRRC34.
Dilution	WB~~1:2000 E~~Use at an assay dependent concentration.
Format	Purified polyclonal antibody supplied in PBS with 0.09% (W/V) sodium azide. This antibody is purified through a protein A column, followed by peptide affinity purification.
Storage	Maintain refrigerated at 2-8°C for up to 2 weeks. For long term storage store at -20°C in small aliquots to prevent freeze-thaw cycles.
Precautions	LRRC34 Antibody (Center) is for research use only and not for use in diagnostic or therapeutic procedures.

Protein Information

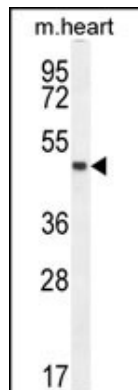
Name	LRRC34
Function	Highly expressed in stem cells where it may be involved in regulation of pluripotency. In embryonic stem cells (ESCs), important for normal expression of the pluripotency regulators POU5F1/OCT4 and KLF4. Also important for expression of the ectodermal marker gene NES and the endodermal marker

gene GATA4. Promotes stem cell proliferation in vitro.

Cellular Location

Nucleus {ECO:0000250|UniProtKB:Q9DAM1}. Nucleus, nucleolus {ECO:0000250|UniProtKB:Q9DAM1}. Cytoplasm {ECO:0000250|UniProtKB:Q9DAM1}. Note=As stem cells differentiate, translocates from the nucleolus to the nucleus and then to the cytoplasm. Colocalizes with NPM1 and NCL in the nucleolus {ECO:0000250|UniProtKB:Q9DAM1}

Images



LRRC34 Antibody (Center) (Cat. #AP10603c) western blot analysis in mouse heart tissue lysates (35ug/lane). This demonstrates the LRRC34 antibody detected the LRRC34 protein (arrow).

Please note: All products are 'FOR RESEARCH USE ONLY. NOT FOR USE IN DIAGNOSTIC OR THERAPEUTIC PROCEDURES'.