

# CCDC37 Antibody (N-term)

Affinity Purified Rabbit Polyclonal Antibody (Pab)

Catalog # AP10625a

## Product Information

---

Application	WB, E
Primary Accession	<a href="#">Q494V2</a>
Other Accession	<a href="#">NP_872434.2</a>
Reactivity	Human
Host	Rabbit
Clonality	Polyclonal
Isotype	Rabbit IgG
Clone Names	RB28388
Calculated MW	71117
Antigen Region	16-45

## Additional Information

---

Gene ID	348807
Other Names	Coiled-coil domain-containing protein 37, CCDC37
Target/Specificity	This CCDC37 antibody is generated from rabbits immunized with a KLH conjugated synthetic peptide between 16-45 amino acids from the N-terminal region of human CCDC37.
Dilution	WB~~1:1000 E~~Use at an assay dependent concentration.
Format	Purified polyclonal antibody supplied in PBS with 0.09% (W/V) sodium azide. This antibody is purified through a protein A column, followed by peptide affinity purification.
Storage	Maintain refrigerated at 2-8°C for up to 2 weeks. For long term storage store at -20°C in small aliquots to prevent freeze-thaw cycles.
Precautions	CCDC37 Antibody (N-term) is for research use only and not for use in diagnostic or therapeutic procedures.

## Protein Information

---

Name	CFAP100 ( <a href="#">HGNC:26842</a> )
Function	May play a role in ciliary/flagellar motility by regulating the assembly and the activity of axonemal inner dynein arm.
Cellular Location	Cytoplasm, cytoskeleton, cilium axoneme {ECO:0000250 UniProtKB:A8I4E9}

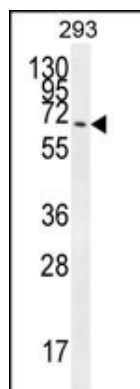
## References

---

Gerhard, D.S., et al. Genome Res. 14 (10B), 2121-2127 (2004) :

## Images

---



CCDC37 Antibody (N-term) (Cat. #AP10625a) western blot analysis in 293 cell line lysates (35ug/lane). This demonstrates the CCDC37 antibody detected the CCDC37 protein (arrow).

Please note: All products are 'FOR RESEARCH USE ONLY. NOT FOR USE IN DIAGNOSTIC OR THERAPEUTIC PROCEDURES'.