

# S100Z Antibody (N-term)

Affinity Purified Rabbit Polyclonal Antibody (Pab)

Catalog # AP10626a

## Product Information

---

Application	FC, WB, E
Primary Accession	<a href="#">Q8WVG8</a>
Other Accession	<a href="#">NP_570128.2</a>
Reactivity	Human, Mouse
Host	Rabbit
Clonality	Polyclonal
Isotype	Rabbit IgG
Clone Names	RB28400
Calculated MW	11620
Antigen Region	1-30

## Additional Information

---

Gene ID	170591
Other Names	Protein S100-Z, S100 calcium-binding protein Z, S100Z
Target/Specificity	This S100Z antibody is generated from rabbits immunized with a KLH conjugated synthetic peptide between 1-30 amino acids from the N-terminal region of human S100Z.
Dilution	FC~~1:10~50 WB~~1:1000 E~~Use at an assay dependent concentration.
Format	Purified polyclonal antibody supplied in PBS with 0.09% (W/V) sodium azide. This antibody is purified through a protein A column, followed by peptide affinity purification.
Storage	Maintain refrigerated at 2-8°C for up to 2 weeks. For long term storage store at -20°C in small aliquots to prevent freeze-thaw cycles.
Precautions	S100Z Antibody (N-term) is for research use only and not for use in diagnostic or therapeutic procedures.

## Protein Information

---

Name	S100Z ( <a href="#">HGNC:30367</a> )
Tissue Location	Highest level of expression in spleen and leukocytes.

## Background

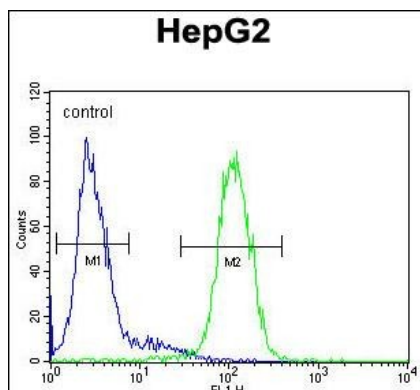
---

Members of the S100 protein family contain 2 calcium-binding EF-hands and exhibit cell-type specific expression patterns. For additional background information on S100 proteins, see MIM 114085.

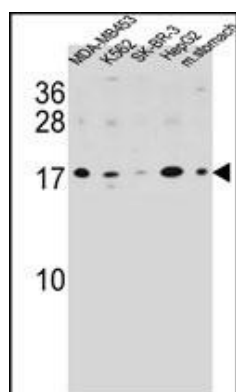
## References

Festen, E.A., et al. Am. J. Gastroenterol. 105(2):395-402(2010) Gribenko, A.V., et al. Biochemistry 40(51):15538-15548(2001)

## Images



S100Z Antibody (N-term) (Cat. #AP10626a) flow cytometric analysis of HepG2 cells (right histogram) compared to a negative control cell (left histogram). FITC-conjugated goat-anti-rabbit secondary antibodies were used for the analysis.



S100Z Antibody (N-term) (Cat. #AP10626a) western blot analysis in MDA-MB453, K562, SK-BR-3, HepG2 cell line and mouse stomach tissue lysates (35ug/lane). This demonstrates the S100Z antibody detected the S100Z protein (arrow).

Please note: All products are 'FOR RESEARCH USE ONLY. NOT FOR USE IN DIAGNOSTIC OR THERAPEUTIC PROCEDURES'.