

POTEF Antibody (Center)

Affinity Purified Rabbit Polyclonal Antibody (Pab)

Catalog # AP10631c

Product Information

Application	WB, E
Primary Accession	A5A3E0
Other Accession	Q6S8J3 , NP_001093241.1
Reactivity	Human
Host	Rabbit
Clonality	Polyclonal
Isotype	Rabbit IgG
Clone Names	RB28477
Calculated MW	121445
Antigen Region	656-685

Additional Information

Gene ID	728378
Other Names	POTE ankyrin domain family member F, ANKRD26-like family C member 1B, Chimeric POTE-actin protein, POTEF, A26C1B
Target/Specificity	This POTEF antibody is generated from rabbits immunized with a KLH conjugated synthetic peptide between 656-685 amino acids from the Central region of human POTEF.
Dilution	WB~~1:1000 E~~Use at an assay dependent concentration.
Format	Purified polyclonal antibody supplied in PBS with 0.09% (W/V) sodium azide. This antibody is purified through a protein A column, followed by peptide affinity purification.
Storage	Maintain refrigerated at 2-8°C for up to 2 weeks. For long term storage store at -20°C in small aliquots to prevent freeze-thaw cycles.
Precautions	POTEF Antibody (Center) is for research use only and not for use in diagnostic or therapeutic procedures.

Protein Information

Name	POTEF
Synonyms	A26C1B
Cellular Location	Cytoplasm, cell cortex. Note=Colocalizes with actin filaments

Tissue Location

Expressed in breast cancer cell lines (at protein level).

References

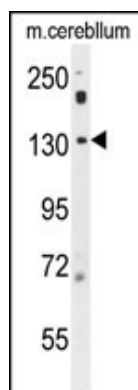
Liu, X.F., et al. Apoptosis 14(10):1237-1244(2009)

Lee, Y., et al. Proc. Natl. Acad. Sci. U.S.A. 103(47):17885-17890(2006)

Chang, K.W., et al. Hepatol. Res. 36(1):33-39(2006)

Hillier, L.W., et al. Nature 434(7034):724-731(2005)

Images



POTEF Antibody (Center) (Cat. #AP10631c) western blot analysis in mouse cerebellum tissue lysates (35ug/lane). This demonstrates the POTEF antibody detected the POTEF protein (arrow).

Please note: All products are 'FOR RESEARCH USE ONLY. NOT FOR USE IN DIAGNOSTIC OR THERAPEUTIC PROCEDURES'.