

WDR76 Antibody (C-term)

Affinity Purified Rabbit Polyclonal Antibody (Pab)

Catalog # AP10651b

Product Information

Application	WB, E
Primary Accession	Q9H967
Other Accession	NP_001161413.1 , NP_079184.2
Reactivity	Human, Mouse
Host	Rabbit
Clonality	Polyclonal
Isotype	Rabbit IgG
Clone Names	RB30080
Calculated MW	69769
Antigen Region	455-484

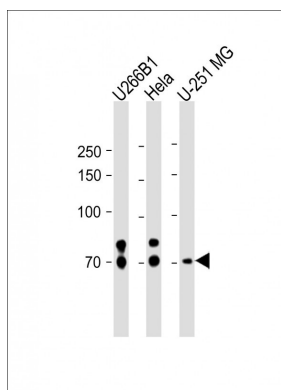
Additional Information

Gene ID	79968
Other Names	WD repeat-containing protein 76, WDR76
Target/Specificity	This WDR76 antibody is generated from rabbits immunized with a KLH conjugated synthetic peptide between 455-484 amino acids from the C-terminal region of human WDR76.
Dilution	WB~~1:1000 E~~Use at an assay dependent concentration.
Format	Purified polyclonal antibody supplied in PBS with 0.05% (V/V) Proclin 300. This antibody is purified through a protein A column, followed by peptide affinity purification.
Storage	Maintain refrigerated at 2-8°C for up to 2 weeks. For long term storage store at -20°C in small aliquots to prevent freeze-thaw cycles.
Precautions	WDR76 Antibody (C-term) is for research use only and not for use in diagnostic or therapeutic procedures.

Protein Information

Name	WDR76
Function	Specifically binds 5-hydroxymethylcytosine (5hmC), suggesting that it acts as a specific reader of 5hmC.

Images



All lanes: Anti-WDR76 Antibody (C-term) at 1:1000 dilution Lane 1: U266B1 whole cell lysate Lane 2: HeLa whole cell lysate Lane 3: U-251 MG whole cell lysate Lysates/proteins at 20 µg per lane. Secondary: Goat Anti-Rabbit IgG, (H+L), Peroxidase conjugated (ASP1615) at 1/15000 dilution. Observed band size: 70 KDa Blocking/Dilution buffer: 5% NFDM/TBST.

Please note: All products are 'FOR RESEARCH USE ONLY. NOT FOR USE IN DIAGNOSTIC OR THERAPEUTIC PROCEDURES'.