

LRRC36 Antibody (N-term)

Affinity Purified Rabbit Polyclonal Antibody (Pab)

Catalog # AP10657a

Product Information

Application	WB, E
Primary Accession	Q1X8D7
Other Accession	Q3V0M2 , NP_060766.5 , NP_001155047.1
Reactivity	Human, Mouse
Host	Rabbit
Clonality	Polyclonal
Isotype	Rabbit IgG
Clone Names	RB30122
Calculated MW	83823
Antigen Region	88-117

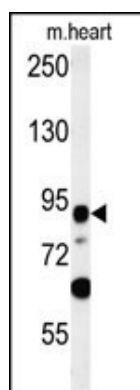
Additional Information

Gene ID	55282
Other Names	Leucine-rich repeat-containing protein 36, ROR gamma-binding protein 70, LRRC36, RORBP70
Target/Specificity	This LRRC36 antibody is generated from rabbits immunized with a KLH conjugated synthetic peptide between 88-117 amino acids from the N-terminal region of human LRRC36.
Dilution	WB~~1:1000 E~~Use at an assay dependent concentration.
Format	Purified polyclonal antibody supplied in PBS with 0.09% (W/V) sodium azide. This antibody is purified through a protein A column, followed by peptide affinity purification.
Storage	Maintain refrigerated at 2-8°C for up to 2 weeks. For long term storage store at -20°C in small aliquots to prevent freeze-thaw cycles.
Precautions	LRRC36 Antibody (N-term) is for research use only and not for use in diagnostic or therapeutic procedures.

Protein Information

Name	LRRC36
Synonyms	RORBP70

Images



LRRC36 Antibody (N-term) (Cat. #AP10657a) western blot analysis in mouse heart tissue lysates (35ug/lane). This demonstrates the LRRC36 antibody detected the LRRC36 protein (arrow).

Please note: All products are 'FOR RESEARCH USE ONLY. NOT FOR USE IN DIAGNOSTIC OR THERAPEUTIC PROCEDURES'.