

PDE7B Antibody (C-term)

Affinity Purified Rabbit Polyclonal Antibody (Pab)

Catalog # AP10675b

Product Information

Application	WB, E
Primary Accession	Q9NP56
Other Accession	NP_061818.1
Reactivity	Human
Host	Rabbit
Clonality	Polyclonal
Isotype	Rabbit IgG
Clone Names	RB24545
Calculated MW	51835
Antigen Region	421-450

Additional Information

Gene ID	27115
Other Names	cAMP-specific 3', 5'-cyclic phosphodiesterase 7B, PDE7B
Target/Specificity	This PDE7B antibody is generated from rabbits immunized with a KLH conjugated synthetic peptide between 421-450 amino acids from the C-terminal region of human PDE7B.
Dilution	WB~~1:1000 E~~Use at an assay dependent concentration.
Format	Purified polyclonal antibody supplied in PBS with 0.09% (W/V) sodium azide. This antibody is purified through a protein A column, followed by peptide affinity purification.
Storage	Maintain refrigerated at 2-8°C for up to 2 weeks. For long term storage store at -20°C in small aliquots to prevent freeze-thaw cycles.
Precautions	PDE7B Antibody (C-term) is for research use only and not for use in diagnostic or therapeutic procedures.

Protein Information

Name	PDE7B {ECO:0000303 PubMed:10814504}
Function	Hydrolyzes the second messenger cAMP, which is a key regulator of many important physiological processes (PubMed: 10814504 , PubMed: 10872825). May be involved in the control of cAMP-mediated neural activity and cAMP metabolism in the brain (PubMed: 10814504).

Tissue Location

Highly expressed in brain (PubMed:10814504). Also expressed in heart, liver, skeletal muscle and pancreas (PubMed:10814504).

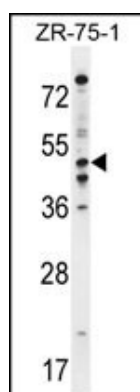
Background

The 3',5'-cyclic nucleotides cAMP and cGMP function as second messengers in a wide variety of signal transduction pathways. 3',5'-cyclic nucleotide phosphodiesterases (PDEs) catalyze the hydrolysis of cAMP and cGMP to the corresponding 5'-monophosphates and provide a mechanism to downregulate cAMP and cGMP signaling. This gene encodes a cAMP-specific phosphodiesterase, a member of the cyclic nucleotide phosphodiesterase family.

References

Bailey, S.D., et al. Diabetes Care 33(10):2250-2253(2010)
Kestenbaum, B., et al. J. Am. Soc. Nephrol. 21(7):1223-1232(2010)
Joslyn, G., et al. Alcohol. Clin. Exp. Res. 34(5):800-812(2010)
Ikeda, M., et al. Biol. Psychiatry 67(3):263-269(2010)
Talmud, P.J., et al. Am. J. Hum. Genet. 85(5):628-642(2009)

Images



PDE7B Antibody (C-term) (Cat. #AP10675b) western blot analysis in ZR-75-1 cell line lysates (35ug/lane). This demonstrates the PDE7B antibody detected the PDE7B protein (arrow).

Please note: All products are 'FOR RESEARCH USE ONLY. NOT FOR USE IN DIAGNOSTIC OR THERAPEUTIC PROCEDURES'.