

APCS Antibody (C-term)

Affinity Purified Rabbit Polyclonal Antibody (Pab)

Catalog # AP10677b

Product Information

Application	WB, IHC-P, E
Primary Accession	P02743
Other Accession	Q13449 , NP_001630.1
Reactivity	Human
Host	Rabbit
Clonality	Polyclonal
Isotype	Rabbit IgG
Clone Names	RB28441
Calculated MW	25387
Antigen Region	151-178

Additional Information

Gene ID	325
Other Names	Serum amyloid P-component, SAP, 95S alpha-1-glycoprotein, Serum amyloid P-component(1-203), APCS, PTX2
Target/Specificity	This APCS antibody is generated from rabbits immunized with a KLH conjugated synthetic peptide between 151-178 amino acids from the C-terminal region of human APCS.
Dilution	WB~~1:1000 IHC-P~~1:100~500 E~~Use at an assay dependent concentration.
Format	Purified polyclonal antibody supplied in PBS with 0.09% (W/V) sodium azide. This antibody is purified through a protein A column, followed by peptide affinity purification.
Storage	Maintain refrigerated at 2-8°C for up to 2 weeks. For long term storage store at -20°C in small aliquots to prevent freeze-thaw cycles.
Precautions	APCS Antibody (C-term) is for research use only and not for use in diagnostic or therapeutic procedures.

Protein Information

Name	APCS
Synonyms	PTX2
Function	Can interact with DNA and histones and may scavenge nuclear material

released from damaged circulating cells. May also function as a calcium-dependent lectin.

Cellular Location Secreted.

Tissue Location Found in serum and urine.

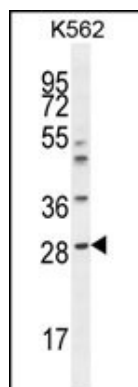
Background

The protein encoded by this gene is a glycoprotein, belonging to the pentraxin family of proteins, which has a characteristic pentameric organization. These family members have considerable sequence homology which is thought to be the result of gene duplication. The binding of the encoded protein to proteins in the pathological amyloid cross-beta fold suggests its possible role as a chaperone. This protein is also thought to control the degradation of chromatin. It has been demonstrated that this protein binds to apoptotic cells at an early stage, which raises the possibility that it is involved in dealing with apoptotic cells in vivo.

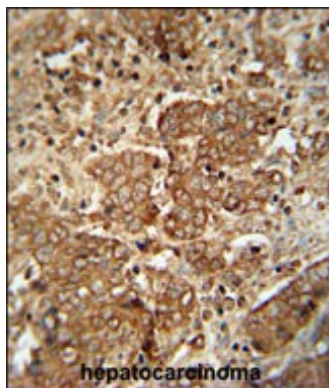
References

Song, Z., et al. Atherosclerosis 211(1):90-95(2010)
Davila, S., et al. Genes Immun. 11(3):232-238(2010)
McGeachie, M., et al. Circulation 120(24):2448-2454(2009)
Lu, J., et al. Nature 456(7224):989-992(2008)
Verwey, N.A., et al. Dement Geriatr Cogn Disord 26(6):522-527(2008)

Images



APCS Antibody (C-term) (Cat. #AP10677b) western blot analysis in K562 cell line lysates (35ug/lane). This demonstrates the APCS antibody detected the APCS protein (arrow).



APCS antibody (C-term) (Cat. #AP10677b) immunohistochemistry analysis in formalin fixed and paraffin embedded human hepatocarcinoma followed by peroxidase conjugation of the secondary antibody and DAB staining. This data demonstrates the use of the APCS antibody (C-term) for immunohistochemistry. Clinical relevance has not been evaluated.

Please note: All products are 'FOR RESEARCH USE ONLY. NOT FOR USE IN DIAGNOSTIC OR THERAPEUTIC PROCEDURES'.