

# HP Antibody (Center)

Affinity Purified Rabbit Polyclonal Antibody (Pab)

Catalog # AP10680C

## Product Information

---

<b>Application</b>	IHC-P-Leica, FC, IF, WB, E
<b>Primary Accession</b>	<a href="#">P00738</a>
<b>Other Accession</b>	<a href="#">NP_005134.1</a>
<b>Reactivity</b>	Human, Rat, Mouse
<b>Host</b>	Rabbit
<b>Clonality</b>	Polyclonal
<b>Isotype</b>	Rabbit IgG
<b>Clone Names</b>	RB28443
<b>Calculated MW</b>	45205
<b>Antigen Region</b>	296-322

## Additional Information

---

<b>Gene ID</b>	3240
<b>Other Names</b>	Haptoglobin, Zonulin, Haptoglobin alpha chain, Haptoglobin beta chain, HP
<b>Target/Specificity</b>	This HP antibody is generated from rabbits immunized with a KLH conjugated synthetic peptide between 296-322 amino acids from the Central region of human HP.
<b>Dilution</b>	IHC-P-Leica~~1:500 FC~~1:10~50 IF~~1:10~50 WB~~1:2000 E~~Use at an assay dependent concentration.
<b>Format</b>	Purified polyclonal antibody supplied in PBS with 0.09% (W/V) sodium azide. This antibody is purified through a protein A column, followed by peptide affinity purification.
<b>Storage</b>	Maintain refrigerated at 2-8°C for up to 2 weeks. For long term storage store at -20°C in small aliquots to prevent freeze-thaw cycles.
<b>Precautions</b>	HP Antibody (Center) is for research use only and not for use in diagnostic or therapeutic procedures.

## Protein Information

---

<b>Name</b>	HP
<b>Function</b>	As a result of hemolysis, hemoglobin is found to accumulate in the kidney and is secreted in the urine. Haptoglobin captures, and combines with free plasma hemoglobin to allow hepatic recycling of heme iron and to prevent

kidney damage. Haptoglobin also acts as an antioxidant, has antibacterial activity, and plays a role in modulating many aspects of the acute phase response. Hemoglobin/haptoglobin complexes are rapidly cleared by the macrophage CD163 scavenger receptor expressed on the surface of liver Kupfer cells through an endocytic lysosomal degradation pathway.

**Cellular Location**

Secreted.

**Tissue Location**

Expressed by the liver and secreted in plasma.

## Background

---

This gene encodes a preproprotein, which is processed to yield both alpha and beta chains, which subsequently combine as a tetramer to produce haptoglobin. Haptoglobin functions to bind free plasma hemoglobin, which allows degradative enzymes to gain access to the hemoglobin, while at the same time preventing loss of iron through the kidneys and protecting the kidneys from damage by hemoglobin. Mutations in this gene and/or its regulatory regions cause ahaptoglobinemia or hypohaptoglobinemia. This gene has also been linked to diabetic nephropathy, the incidence of coronary artery disease in type 1 diabetes, Crohn's disease, inflammatory disease behavior, primary sclerosing cholangitis, susceptibility to idiopathic Parkinson's disease, and a reduced incidence of *Plasmodium falciparum* malaria. A similar duplicated gene is located next to this gene on chromosome 16. Multiple transcript variants encoding different isoforms have been found for this gene.

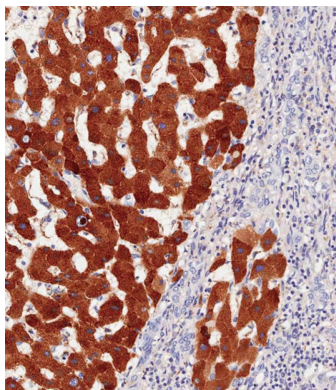
## References

---

Bailey, S.D., et al. Diabetes Care 33(10):2250-2253(2010)  
Ucisk-Akkaya, E., et al. Mol. Hum. Reprod. 16(10):770-777(2010)  
Ruano, G., et al. Pharmacogenomics 11(7):959-971(2010)  
Savy, M., et al. PLoS ONE 5 (6), E11075 (2010) :  
Kasvosve, I., et al. Adv Clin Chem 50, 23-46 (2010) :

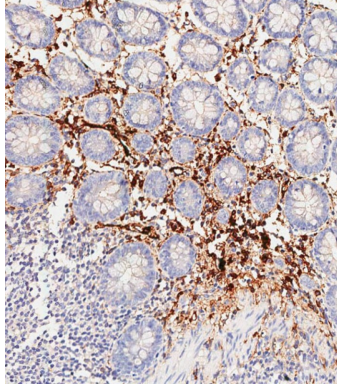
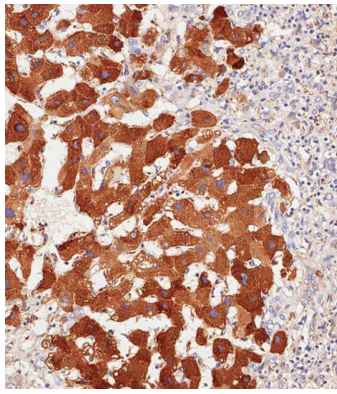
## Images

---

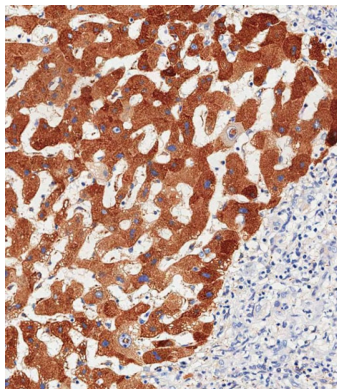


Immunohistochemical analysis of paraffin-embedded Human hepatocarcinoma tissue using AP10680C performed on the Leica® BOND RXm. Tissue was fixed with formaldehyde at room temperature, antigen retrieval was by heat mediation with a EDTA buffer (pH9.0). Samples were incubated with primary antibody(1:500) for 1 hours at room temperature. A undiluted biotinylated CRF Anti-Polyvalent HRP Polymer antibody was used as the secondary antibody.

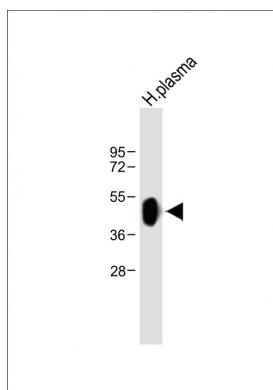
Immunohistochemical analysis of paraffin-embedded Human hepatocarcinoma tissue using AP10680C performed on the Leica® BOND RXm. Tissue was fixed with formaldehyde at room temperature, antigen retrieval was by heat mediation with a EDTA buffer (pH9.0). Samples were incubated with primary antibody(1:500) for 1 hours at room temperature. A undiluted biotinylated CRF Anti-Polyvalent HRP Polymer antibody was used as the secondary antibody.



Immunohistochemical analysis of paraffin-embedded Human colon tissue using AP10680C performed on the Leica® BOND RXm. Tissue was fixed with formaldehyde at room temperature, antigen retrieval was by heat mediation with a EDTA buffer (pH9. 0). Samples were incubated with primary antibody(1:500) for 1 hours at room temperature. A undiluted biotinylated CRF Anti-Polyvalent HRP Polymer antibody was used as the secondary antibody.

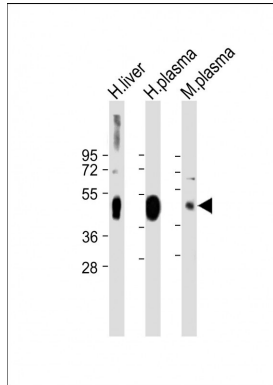
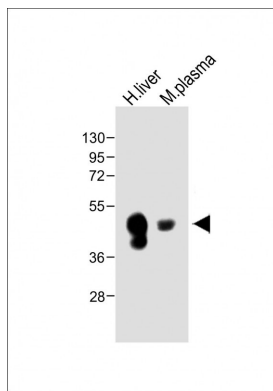


Immunohistochemical analysis of paraffin-embedded Human hepatocarcinoma tissue using AP10680C performed on the Leica® BOND RXm. Tissue was fixed with formaldehyde at room temperature, antigen retrieval was by heat mediation with a EDTA buffer (pH9. 0). Samples were incubated with primary antibody(1:500) for 1 hours at room temperature. A undiluted biotinylated CRF Anti-Polyvalent HRP Polymer antibody was used as the secondary antibody.

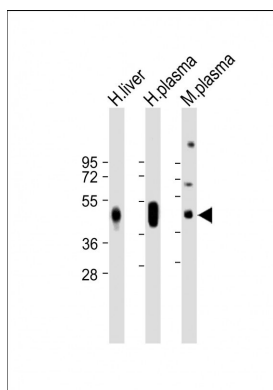


Anti-HP Antibody (Center) at 1:2000 dilution + Human plasma lysate Lysates/proteins at 20 µg per lane. Secondary Goat Anti-Rabbit IgG, (H+L), Peroxidase conjugated at 1/10000 dilution. Predicted band size : 45 kDa Blocking/Dilution buffer: 5% NFDM/TBST.

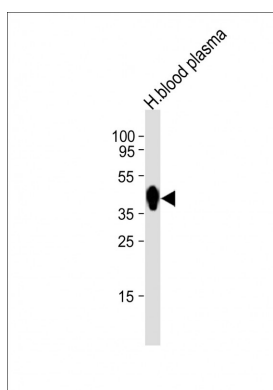
All lanes : Anti-HP Antibody (Center) at 1:1000 dilution  
Lane 1: Human liver lysate Lane 2: Mouse plasma lysate  
Lysates/proteins at 20 µg per lane. Secondary Goat Anti-Rabbit IgG, (H+L), Peroxidase conjugated at 1/10000 dilution. Predicted band size : 45 kDa Blocking/Dilution buffer: 5% NFDM/TBST.



All lanes : Anti-HP Antibody (Center) at 1:2000 dilution  
 Lane 1: Human liver lysate Lane 2: Human plasma lysate  
 Lane 3: Mouse plasma lysate Lysates/proteins at 20 µg per lane. Secondary Goat Anti-Rabbit IgG, (H+L), Peroxidase conjugated at 1/10000 dilution. Predicted band size : 45 kDa Blocking/Dilution buffer: 5% NFDM/TBST.

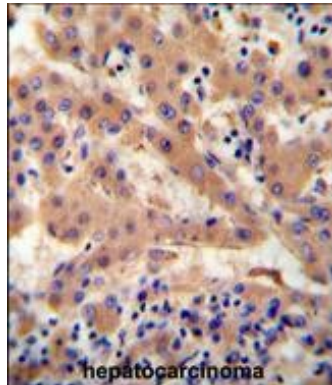
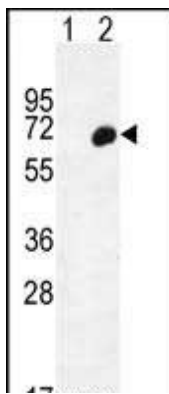


All lanes : Anti-HP Antibody (Center) at 1:1000-1:2000 dilution Lane 1: Human liver lysate Lane 2: Human plasma lysate Lane 3: Mouse plasma lysate Lysates/proteins at 20 µg per lane. Secondary Goat Anti-Rabbit IgG, (H+L), Peroxidase conjugated at 1/10000 dilution. Predicted band size : 45 kDa Blocking/Dilution buffer: 5% NFDM/TBST.

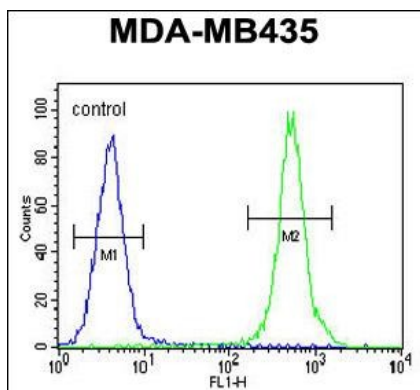


Anti-HP Antibody (Center)at 1:1000 dilution + human blood plasma lysates Lysates/proteins at 20 µg per lane. Secondary Goat Anti-Rabbit IgG, (H+L), Peroxidase conjugated at 1/10000 dilution Predicted band size : 45 kDa Blocking/Dilution buffer: 5% NFDM/TBST.

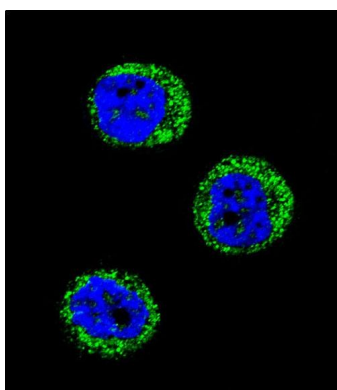
Western blot analysis of HP (arrow) using rabbit polyclonal HP Antibody (Center) (Cat. #AP10680c). 293 cell lysates (2 ug/lane) either nontransfected (Lane 1) or transiently transfected (Lane 2) with the HP gene.



HP antibody (Center) (Cat. #AP10680c) immunohistochemistry analysis in formalin fixed and paraffin embedded human hepatocarcinoma followed by peroxidase conjugation of the secondary antibody and DAB staining. This data demonstrates the use of the HP antibody (Center) for immunohistochemistry. Clinical relevance has not been evaluated.

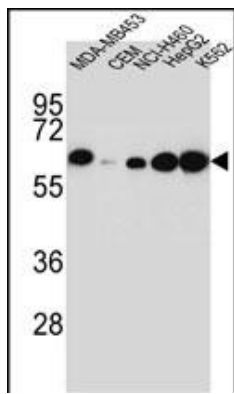


HP Antibody (Center) (Cat. #AP10680c) flow cytometric analysis of MDA-MB435 cells (right histogram) compared to a negative control cell (left histogram). FITC-conjugated goat-anti-rabbit secondary antibodies were used for the analysis.



Confocal immunofluorescent analysis of HP Antibody (Center) (Cat. #AP10680c) with MDA-MB435 cell followed by Alexa Fluor 488-conjugated goat anti-rabbit IgG (green). DAPI was used to stain the cell nuclear (blue).

HP Antibody (Center) (Cat. #AP10680c) western blot analysis in MDA-MB435, CEM, NCI-H460, HepG2, K562 cell line lysates (35ug/lane). This demonstrates the HP antibody detected the HP protein (arrow).



Please note: All products are 'FOR RESEARCH USE ONLY. NOT FOR USE IN DIAGNOSTIC OR THERAPEUTIC PROCEDURES'.