

# AMY2B Antibody (N-term)

Affinity Purified Rabbit Polyclonal Antibody (Pab)

Catalog # AP10694a

## Product Information

---

<b>Application</b>	WB, IHC-P, FC, IF, E
<b>Primary Accession</b>	<a href="#">P19961</a>
<b>Other Accession</b>	<a href="#">P04746</a> , <a href="#">P04745</a> , <a href="#">NP_066188.1</a>
<b>Reactivity</b>	Human
<b>Host</b>	Rabbit
<b>Clonality</b>	Polyclonal
<b>Isotype</b>	Rabbit IgG
<b>Clone Names</b>	RB23658
<b>Calculated MW</b>	57710
<b>Antigen Region</b>	74-100

## Additional Information

---

<b>Gene ID</b>	280
<b>Other Names</b>	Alpha-amylase 2B, 4-alpha-D-glucan glucanohydrolase 2B, Carcinoid alpha-amylase, AMY2B
<b>Target/Specificity</b>	This AMY2B antibody is generated from rabbits immunized with a KLH conjugated synthetic peptide between 74-100 amino acids from the N-terminal region of human AMY2B.
<b>Dilution</b>	WB~~1:1000 IHC-P~~1:100~500 FC~~1:10~50 IF~~1:10~50 E~~Use at an assay dependent concentration.
<b>Format</b>	Purified polyclonal antibody supplied in PBS with 0.05% (V/V) Proclin 300. This antibody is prepared by Saturated Ammonium Sulfate (SAS) precipitation followed by dialysis against PBS.
<b>Storage</b>	Maintain refrigerated at 2-8°C for up to 2 weeks. For long term storage store at -20°C in small aliquots to prevent freeze-thaw cycles.
<b>Precautions</b>	AMY2B Antibody (N-term) is for research use only and not for use in diagnostic or therapeutic procedures.

## Protein Information

---

<b>Name</b>	AMY2B
<b>Cellular Location</b>	Secreted.

## Background

---

Amylases are secreted proteins that hydrolyze 1,4-alpha-glucoside bonds in oligosaccharides and polysaccharides, and thus catalyze the first step in digestion of dietary starch and glycogen. The human genome has a cluster of several amylase genes that are expressed at high levels in either salivary gland or pancreas. This gene encodes an amylase isoenzyme produced by the pancreas.

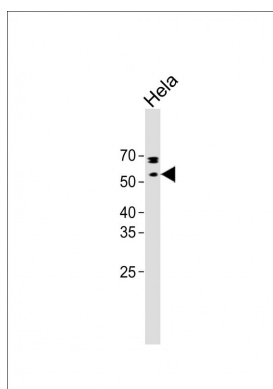
## References

---

Baltova, S.D. Folia Med (Plovdiv) 47(1):37-41(2005)  
Fortna, A., et al. PLoS Biol. 2 (7), E207 (2004) :  
Koyama, I., et al. Clin. Chim. Acta 309(1):73-83(2001)  
Aughsteen, A.A. Saudi Med J 22(5):410-415(2001)  
Omichi, K., et al. Biochim. Biophys. Acta 1203(2):224-229(1993)

## Images

---



All lanes: Anti-AMY2B Antibody (N-term) at 1:1000 dilution + HeLa whole cell lysate Lysates/proteins at 20 µg per lane. Secondary: Goat Anti-Rabbit IgG, (H+L), Peroxidase conjugated (ASP1615) at 1/15000 dilution. Observed band size: 58 KDa Blocking/Dilution buffer: 5% NFDM/TBST.

Please note: All products are 'FOR RESEARCH USE ONLY. NOT FOR USE IN DIAGNOSTIC OR THERAPEUTIC PROCEDURES'.