

CES4 Antibody (N-term)

Affinity Purified Rabbit Polyclonal Antibody (Pab)
Catalog # AP10710a

Product Information

Application	IHC-P, WB, E
Primary Accession	Q9UKY3
Reactivity	Human
Host	Rabbit
Clonality	Polyclonal
Isotype	Rabbit IgG
Clone Names	RB23181
Antigen Region	47-74

Additional Information

Other Names	Putative inactive carboxylesterase 4, Inactive carboxylesterase 1 pseudogene 1, Placental carboxylesterase 3, PCE-3, CES1P1, CES4
Target/Specificity	This CES4 antibody is generated from rabbits immunized with a KLH conjugated synthetic peptide between 47-74 amino acids from the N-terminal region of human CES4.
Dilution	IHC-P~~1:100~500 WB~~1:1000 E~~Use at an assay dependent concentration.
Format	Purified polyclonal antibody supplied in PBS with 0.09% (W/V) sodium azide. This antibody is purified through a protein A column, followed by peptide affinity purification.
Storage	Maintain refrigerated at 2-8°C for up to 2 weeks. For long term storage store at -20°C in small aliquots to prevent freeze-thaw cycles.
Precautions	CES4 Antibody (N-term) is for research use only and not for use in diagnostic or therapeutic procedures.

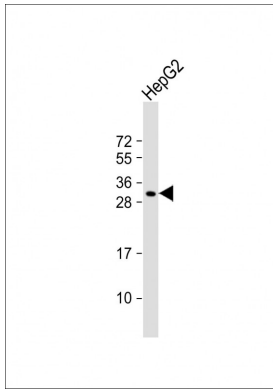
Protein Information

Background

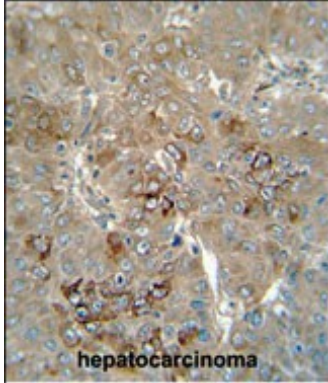
Has no esterase activity (Probable).

Images

Anti-CES4 Antibody (N-term) at 1:1000 dilution + HepG2



whole cell lysate Lysates/proteins at 20 µg per lane. Secondary Goat Anti-Rabbit IgG, (H+L), Peroxidase conjugated at 1/10000 dilution. Predicted band size : 31 kDa Blocking/Dilution buffer: 5% NFDM/TBST.



CES4 antibody (N-term) (Cat. #AP10710a) immunohistochemistry analysis in formalin fixed and paraffin embedded human hepatocarcinoma followed by peroxidase conjugation of the secondary antibody and DAB staining. This data demonstrates the use of the CES4 antibody (N-term) for immunohistochemistry. Clinical relevance has not been evaluated.

Please note: All products are 'FOR RESEARCH USE ONLY. NOT FOR USE IN DIAGNOSTIC OR THERAPEUTIC PROCEDURES'.