

# CD37 Antibody (Center)

Affinity Purified Rabbit Polyclonal Antibody (Pab)  
Catalog # AP10711c

## Product Information

---

<b>Application</b>	WB, FC, E
<b>Primary Accession</b>	<a href="#">P11049</a>
<b>Other Accession</b>	<a href="#">NP_001765.1</a>
<b>Reactivity</b>	Human
<b>Host</b>	Rabbit
<b>Clonality</b>	Polyclonal
<b>Isotype</b>	Rabbit IgG
<b>Clone Names</b>	RB23676
<b>Antigen Region</b>	101-130

## Additional Information

---

<b>Other Names</b>	Leukocyte antigen CD37, Tetraspanin-26, Tspan-26, CD37, CD37, TSPAN26
<b>Target/Specificity</b>	This CD37 antibody is generated from rabbits immunized with a KLH conjugated synthetic peptide between 101-130 amino acids from the Central region of human CD37.
<b>Dilution</b>	WB~~1:1000 FC~~1:10~50 E~~Use at an assay dependent concentration.
<b>Format</b>	Purified polyclonal antibody supplied in PBS with 0.09% (W/V) sodium azide. This antibody is purified through a protein A column, followed by peptide affinity purification.
<b>Storage</b>	Maintain refrigerated at 2-8°C for up to 2 weeks. For long term storage store at -20°C in small aliquots to prevent freeze-thaw cycles.
<b>Precautions</b>	CD37 Antibody (Center) is for research use only and not for use in diagnostic or therapeutic procedures.

## Protein Information

---

### Background

---

The protein encoded by this gene is a member of the transmembrane 4 superfamily, also known as the tetraspanin family. Most of these members are cell-surface proteins that are characterized by the presence of four hydrophobic domains. The proteins mediate signal transduction events that play a role in the regulation of cell development, activation, growth and motility. This encoded protein is a cell surface glycoprotein that is known to complex with integrins and other transmembrane 4 superfamily proteins. It may play a role in T-cell-B-cell interactions. Alternate splicing results in multiple transcript variants encoding

different isoforms.

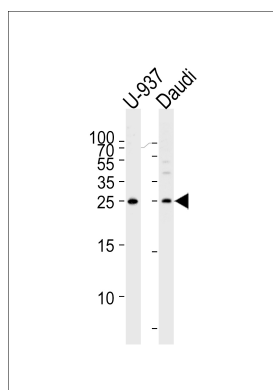
## References

---

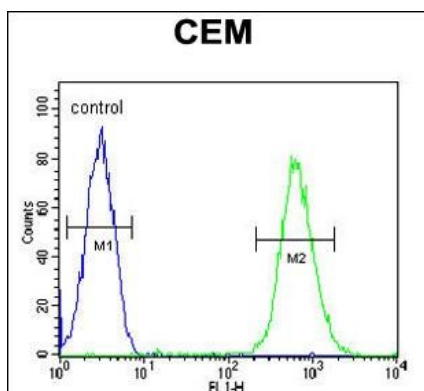
Bailey, S.D., et al. *Diabetes Care* 33(10):2250-2253(2010)  
Gartlan, K.H., et al. *J. Immunol.* 185(6):3158-3166(2010)  
Talmud, P.J., et al. *Am. J. Hum. Genet.* 85(5):628-642(2009)  
Zhao, X., et al. *Blood* 110(7):2569-2577(2007)  
Meyer-Wenttrup, F., et al. *J. Immunol.* 178(1):154-162(2007)

## Images

---



Western blot analysis of lysates from U-937, Daudi cell line (from left to right), using CD37 Antibody (Center)(Cat. #AP10711c). AP10711c was diluted at 1:1000 at each lane. A goat anti-rabbit IgG H&L(HRP) at 1:5000 dilution was used as the secondary antibody. Lysates at 35ug per lane.



CD37 Antibody (Center) (Cat. #AP10711c) flow cytometric analysis of CEM cells (right histogram) compared to a negative control cell (left histogram).FITC-conjugated goat-anti-rabbit secondary antibodies were used for the analysis.

Please note: All products are 'FOR RESEARCH USE ONLY. NOT FOR USE IN DIAGNOSTIC OR THERAPEUTIC PROCEDURES'.