

ENTPD3 Antibody (C-term)

Affinity Purified Rabbit Polyclonal Antibody (Pab)

Catalog # AP10716b

Product Information

Application	WB, IHC-P, FC, E
Primary Accession	O75355
Other Accession	NP_001239.2
Reactivity	Human
Host	Rabbit
Clonality	Polyclonal
Isotype	Rabbit IgG
Clone Names	RB28547
Calculated MW	59105
Antigen Region	496-527

Additional Information

Gene ID	956
Other Names	Ectonucleoside triphosphate diphosphohydrolase 3, NTPDase 3, CD39 antigen-like 3, Ecto-ATP diphosphohydrolase 3, Ecto-ATPDase 3, Ecto-ATPase 3, Ecto-apyrase 3, HB6, ENTPD3, CD39L3
Target/Specificity	This ENTPD3 antibody is generated from rabbits immunized with a KLH conjugated synthetic peptide between 496-527 amino acids from the C-terminal region of human ENTPD3.
Dilution	WB~~1:1000 IHC-P~~1:100~500 FC~~1:10~50 E~~Use at an assay dependent concentration.
Format	Purified polyclonal antibody supplied in PBS with 0.05% (V/V) Proclin 300. This antibody is prepared by Saturated Ammonium Sulfate (SAS) precipitation followed by dialysis against PBS.
Storage	Maintain refrigerated at 2-8°C for up to 2 weeks. For long term storage store at -20°C in small aliquots to prevent freeze-thaw cycles.
Precautions	ENTPD3 Antibody (C-term) is for research use only and not for use in diagnostic or therapeutic procedures.

Protein Information

Name	ENTPD3
Synonyms	CD39L3 {ECO:0000303 PubMed:9676430}

Function	Has a threefold preference for the hydrolysis of ATP over ADP.
Cellular Location	Cell membrane {ECO:0000250 UniProtKB:Q8BFW6}; Multi-pass membrane protein
Tissue Location	Expressed in adult brain, pancreas, spleen and prostate (PubMed:9676430). Moderate or low expression is seen in most tissues (PubMed:9676430). Not expressed in liver and peripheral blood leukocytes (PubMed:9676430).

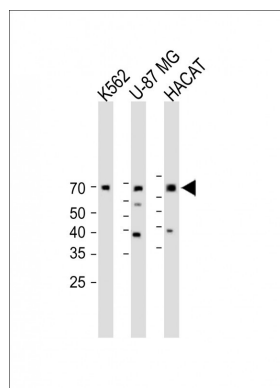
Background

ENTPD3 is similar to E-type nucleotidases (NTPases). NTPases, such as CD39, mediate catabolism of extracellular nucleotides. ENTPD3 contains 4 apyrase-conserved regions which is characteristic of NTPases.

References

Fausther, M., et al. Am. J. Physiol. Lung Cell Mol. Physiol. 298 (6), L804-L818 (2010) :
Gaddie, K.J., et al. Biochemistry 48(40):9437-9447(2009)
Munkonda, M.N., et al. FEBS J. 276(2):479-496(2009)
Munkonda, M.N., et al. Biochem. Pharmacol. 74(10):1524-1534(2007)
Ivanenkov, V.V., et al. Biochemistry 44(25):8998-9012(2005)

Images



All lanes : Anti-ENTPD3 Antibody (C-term))at 1:2000 dilution Lane 1:K562 whole cell lysate Lane 2: U-87MG whole cel lysate Lane 3: HACAT whole cel lysate Lysates/proteins at 20 µg per lane. Secondary Goat Anti-Rabbit IgG, (H+L), Peroxidase conjugated (ASP1615) at 1/15000 dilution. Observed band size : 60kDa Blocking/Dilution buffer: 5% NFDm/TBST.

Please note: All products are 'FOR RESEARCH USE ONLY. NOT FOR USE IN DIAGNOSTIC OR THERAPEUTIC PROCEDURES'.