

GSDMC Antibody (Center)

Affinity Purified Rabbit Polyclonal Antibody (Pab)

Catalog # AP10771C

Product Information

Application	WB, IHC-P, FC, E
Primary Accession	Q9BYG8
Other Accession	NP_113603.1
Reactivity	Human
Host	Rabbit
Clonality	Polyclonal
Isotype	Rabbit IgG
Clone Names	RB27043
Calculated MW	57692
Antigen Region	218-246

Additional Information

Gene ID	56169
Other Names	Gasdermin-C, Melanoma-derived leucine zipper-containing extranuclear factor, GSDMC, MLZE
Target/Specificity	This GSDMC antibody is generated from rabbits immunized with a KLH conjugated synthetic peptide between 218-246 amino acids from the Central region of human GSDMC.
Dilution	WB~~1:2000 IHC-P~~1:100~500 FC~~1:25 E~~Use at an assay dependent concentration.
Format	Purified polyclonal antibody supplied in PBS with 0.09% (W/V) sodium azide. This antibody is purified through a protein A column, followed by peptide affinity purification.
Storage	Maintain refrigerated at 2-8°C for up to 2 weeks. For long term storage store at -20°C in small aliquots to prevent freeze-thaw cycles.
Precautions	GSDMC Antibody (Center) is for research use only and not for use in diagnostic or therapeutic procedures.

Protein Information

Name	GSDMC {ECO:0000303 PubMed:17350798, ECO:0000312 HGNC:HGNC:7151}
Function	[Gasdermin-C]: This form constitutes the precursor of the pore-forming

protein: upon cleavage, the released N-terminal moiety (Gasdermin-C, N-terminal) binds to membranes and forms pores, triggering pyroptosis.

Cellular Location

[Gasdermin-C]: Cytoplasm, cytosol

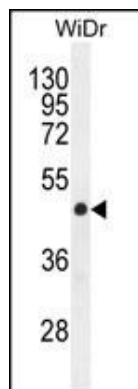
Tissue Location

Expressed mainly in trachea and spleen (PubMed:11223543). In the esophagus, expressed in differentiating cells and probably in differentiated cells. Also detected in gastric epithelium (PubMed:19051310).

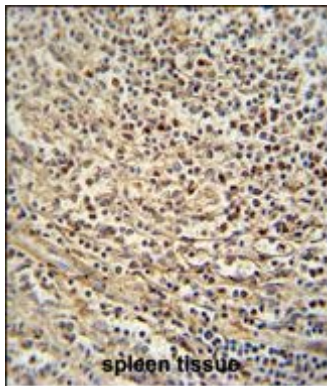
References

Birnbaum, S., et al. Nat. Genet. 41(4):473-477(2009)
Saeki, N., et al. Genes Chromosomes Cancer 48(3):261-271(2009)
Tamura, M., et al. Genomics 89(5):618-629(2007)
Watabe, K., et al. Jpn. J. Cancer Res. 92(2):140-151(2001)

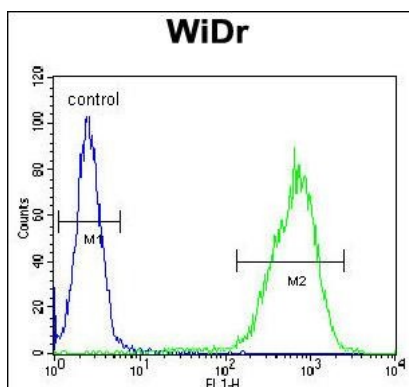
Images



GSDMC Antibody (Center) (Cat. #AP10771c) western blot analysis in WiDr cell line lysates (35ug/lane). This demonstrates the GSDMC antibody detected the GSDMC protein (arrow).



GSDMC antibody (Center) (Cat. #AP10771c) immunohistochemistry analysis in formalin fixed and paraffin embedded human spleen tissue followed by peroxidase conjugation of the secondary antibody and DAB staining. This data demonstrates the use of the GSDMC antibody (Center) for immunohistochemistry. Clinical relevance has not been evaluated.



GSDMC Antibody (Center) (Cat. #AP10771c) flow cytometric analysis of WiDr cells (right histogram) compared to a negative control cell (left histogram). FITC-conjugated goat-anti-rabbit secondary antibodies were used for the analysis.

Citations

- [PD-L1-mediated gasdermin C expression switches apoptosis to pyroptosis in cancer cells and facilitates tumour necrosis](#)

Please note: All products are 'FOR RESEARCH USE ONLY. NOT FOR USE IN DIAGNOSTIC OR THERAPEUTIC PROCEDURES'.