

CK073 Antibody (N-term)

Affinity Purified Rabbit Polyclonal Antibody (Pab)

Catalog # AP10780a

Product Information

Application	WB, IHC-P, FC, E
Primary Accession	Q53FT3
Other Accession	NP_057485.2
Reactivity	Human, Hamster
Host	Rabbit
Clonality	Polyclonal
Isotype	Rabbit IgG
Clone Names	RB28622
Calculated MW	21628
Antigen Region	6-35

Additional Information

Gene ID	51501
Other Names	Protein Hikeshi, C11orf73
Target/Specificity	This CK073 antibody is generated from rabbits immunized with a KLH conjugated synthetic peptide between 6-35 amino acids from the N-terminal region of human CK073.
Dilution	WB~~1:1000 IHC-P~~1:100~500 FC~~1:10~50 E~~Use at an assay dependent concentration.
Format	Purified polyclonal antibody supplied in PBS with 0.09% (W/V) sodium azide. This antibody is purified through a protein A column, followed by peptide affinity purification.
Storage	Maintain refrigerated at 2-8°C for up to 2 weeks. For long term storage store at -20°C in small aliquots to prevent freeze-thaw cycles.
Precautions	CK073 Antibody (N-term) is for research use only and not for use in diagnostic or therapeutic procedures.

Protein Information

Name	HIKESHI (HGNC:26938)
Synonyms	C11orf73
Function	Acts as a specific nuclear import carrier for HSP70 proteins following

heat-shock stress: acts by mediating the nucleoporin- dependent translocation of ATP-bound HSP70 proteins into the nucleus. HSP70 proteins import is required to protect cells from heat shock damages. Does not translocate ADP-bound HSP70 proteins into the nucleus.

Cellular Location

Cytoplasm {ECO:0000250|UniProtKB:Q9DD02}. Cytoplasm, cytosol. Nucleus

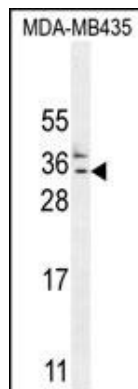
Background

Required for organization and/or function of the secretory apparatus in Clara cells in lung (By similarity).

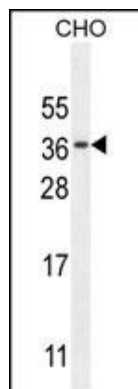
References

Need, A.C., et al. Hum. Mol. Genet. 18(23):4650-4661(2009)

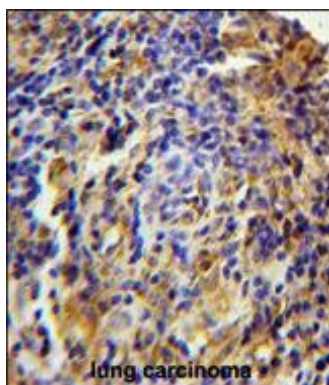
Images



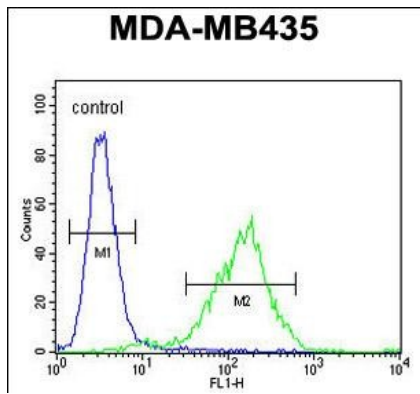
CK073 Antibody (N-term) (Cat. #AP10780a) western blot analysis in MDA-MB435 cell line lysates (35ug/lane). This demonstrates the CK073 antibody detected the CK073 protein (arrow).



CK073 Antibody (N-term) (Cat. #AP10780a) western blot analysis in CHO cell line lysates (35ug/lane). This demonstrates the CK073 antibody detected the CK073 protein (arrow).



CK073 Antibody (N-term) (Cat. #AP10780a) immunohistochemistry analysis in formalin fixed and paraffin embedded human lung carcinoma followed by peroxidase conjugation of the secondary antibody and DAB staining. This data demonstrates the use of the CK073 Antibody (N-term) for immunohistochemistry. Clinical relevance has not been evaluated.



CK073 Antibody (N-term) (Cat. #AP10780a) flow cytometric analysis of MDA-MB435 cells (right histogram) compared to a negative control cell (left histogram). FITC-conjugated goat-anti-rabbit secondary antibodies were used for the analysis.

Please note: All products are 'FOR RESEARCH USE ONLY. NOT FOR USE IN DIAGNOSTIC OR THERAPEUTIC PROCEDURES'.