

CB086 Antibody (C-term)

Affinity Purified Rabbit Polyclonal Antibody (Pab)

Catalog # AP10783b

Product Information

Application	WB, IHC-P, E
Primary Accession	O95876
Other Accession	NP_056994.3
Reactivity	Human
Host	Rabbit
Clonality	Polyclonal
Isotype	Rabbit IgG
Clone Names	RB28626
Calculated MW	85084
Antigen Region	676-705

Additional Information

Gene ID	51057
Other Names	WD repeat-containing and planar cell polarity effector protein fritz homolog, hFRTZ, Bardet-Biedl syndrome 15 protein, WD repeat-containing and planar cell polarity effector protein, WDPCP, BBS15, C2orf86, FRITZ
Target/Specificity	This CB086 antibody is generated from rabbits immunized with a KLH conjugated synthetic peptide between 676-705 amino acids from the C-terminal region of human CB086.
Dilution	WB~~1:1000 IHC-P~~1:100~500 E~~Use at an assay dependent concentration.
Format	Purified polyclonal antibody supplied in PBS with 0.09% (W/V) sodium azide. This antibody is purified through a protein A column, followed by peptide affinity purification.
Storage	Maintain refrigerated at 2-8°C for up to 2 weeks. For long term storage store at -20°C in small aliquots to prevent freeze-thaw cycles.
Precautions	CB086 Antibody (C-term) is for research use only and not for use in diagnostic or therapeutic procedures.

Protein Information

Name	WDPCP
Synonyms	BBS15, C2orf86, FRITZ

Function	Probable effector of the planar cell polarity signaling pathway which regulates the septin cytoskeleton in both ciliogenesis and collective cell movements. Together with FUZ and WDPCP proposed to function as core component of the CPLANE (ciliogenesis and planar polarity effectors) complex involved in the recruitment of peripheral IFT-A proteins to basal bodies (By similarity). Binds phosphatidylinositol 3-phosphate with highest affinity, followed by phosphatidylinositol 4-phosphate and phosphatidylinositol 5-phosphate (PubMed: 35427153).
Cellular Location	Cell membrane {ECO:0000250 UniProtKB:Q32NR9}. Cytoplasm, cytoskeleton, cilium axoneme {ECO:0000250 UniProtKB:Q32NR9} Cytoplasm, cytoskeleton, cilium basal body {ECO:0000250 UniProtKB:Q32NR9}

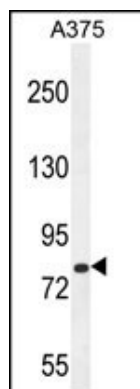
Background

The C2ORF86 gene encodes an ortholog of Drosophila 'fritz,' a cytoplasmic WD40 repeat protein that controls planar cell polarity (summarized by Kim et al., 2010 [PubMed 20671153]).

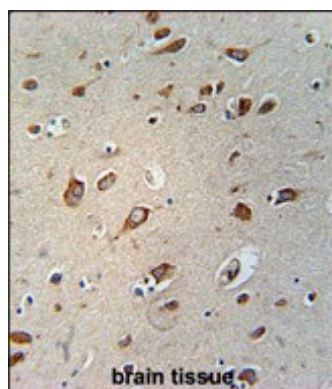
References

Bailey, S.D., et al. Diabetes Care 33(10):2250-2253(2010)
Kim, S.K., et al. Science 329(5997):1337-1340(2010)
Talmud, P.J., et al. Am. J. Hum. Genet. 85(5):628-642(2009)
Eeles, R.A., et al. Nat. Genet. 41(10):1116-1121(2009)
Melzer, D., et al. PLoS Genet. 4 (5), E1000072 (2008) :

Images



CB086 Antibody (C-term) (Cat. #AP10783b) western blot analysis in A375 cell line lysates (35ug/lane). This demonstrates the CB086 antibody detected the CB086 protein (arrow).



CB086 Antibody (C-term) (Cat. #AP10783b) immunohistochemistry analysis in formalin fixed and paraffin embedded human brain tissue followed by peroxidase conjugation of the secondary antibody and DAB staining. This data demonstrates the use of the CB086 Antibody (C-term) for immunohistochemistry. Clinical relevance has not been evaluated.