

ORML2 Antibody (Center)

Affinity Purified Rabbit Polyclonal Antibody (Pab)

Catalog # AP10815c

Product Information

Application	IHC-P, WB, E
Primary Accession	Q53FV1
Other Accession	Q6QI25 , Q9CPZ6 , Q8N138 , Q5XJR6 , Q0VD15 , Q9CQZ0 , Q5E972 , Q5XH57 , Q9P0S3 , Q8JFB7 , Q29RQ9 , NP_054901.1
Reactivity	Human
Predicted	Bovine, Zebrafish, Xenopus, Rat
Host	Rabbit
Clonality	Polyclonal
Isotype	Rabbit IgG
Clone Names	RB28704
Calculated MW	17363
Antigen Region	53-81

Additional Information

Gene ID	29095
Other Names	ORM1-like protein 2, Adoplin-2, ORMDL2
Target/Specificity	This ORML2 antibody is generated from rabbits immunized with a KLH conjugated synthetic peptide between 53-81 amino acids from the Central region of human ORML2.
Dilution	IHC-P~~1:100~500 WB~~1:1000 E~~Use at an assay dependent concentration.
Format	Purified polyclonal antibody supplied in PBS with 0.09% (W/V) sodium azide. This antibody is purified through a protein A column, followed by peptide affinity purification.
Storage	Maintain refrigerated at 2-8°C for up to 2 weeks. For long term storage store at -20°C in small aliquots to prevent freeze-thaw cycles.
Precautions	ORML2 Antibody (Center) is for research use only and not for use in diagnostic or therapeutic procedures.

Protein Information

Name	ORMDL2
Function	Plays an essential role in the homeostatic regulation of sphingolipid de novo biosynthesis by modulating the activity of the serine palmitoyltransferase

(SPT) in response to ceramide levels (PubMed:[20182505](#)). When complexed to SPT, the binding of ceramides to its N-terminus stabilizes a conformation that block SPT substrate entry, hence preventing SPT catalytic activity. Through this mechanism, maintains ceramide levels at sufficient concentrations for the production of complex sphingolipids, but which prevents the accumulation of ceramides to levels that trigger apoptosis (By similarity).

Cellular Location

Endoplasmic reticulum membrane; Multi-pass membrane protein

Tissue Location

Widely expressed. Expressed in adult and fetal heart, brain, lung, liver, skeletal muscle and kidney. Expressed in adult pancreas and placenta and in fetal spleen abd thymus

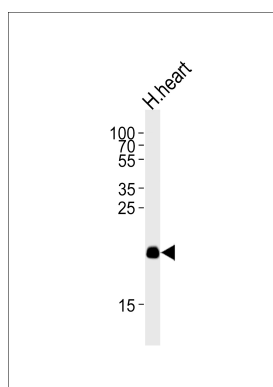
Background

Negative regulator of sphingolipid synthesis.

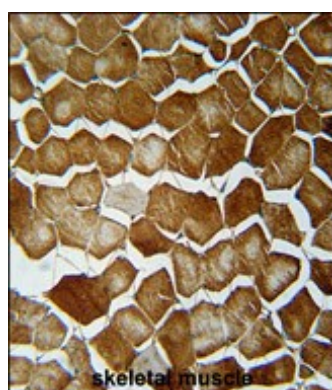
References

Hjelmqvist, L., et al. Genome Biol. 3 (6), RESEARCH0027 (2002) :

Images



Western blot analysis of lysate from human heart tissue lysate, using ORML2 Antibody (Center)(Cat. #AP10815c). AP10815c was diluted at 1:1000 at each lane. A goat anti-rabbit IgG H&L(HRP) at 1:5000 dilution was used as the secondary antibody. Lysate at 35ug per lane.



ORML2 Antibody (Center) (Cat. #AP10815c) immunohistochemistry analysis in formalin fixed and paraffin embedded human skeletal muscle followed by peroxidase conjugation of the secondary antibody and DAB staining. This data demonstrates the use of the ORML2 Antibody (Center) for immunohistochemistry. Clinical relevance has not been evaluated.

Please note: All products are 'FOR RESEARCH USE ONLY. NOT FOR USE IN DIAGNOSTIC OR THERAPEUTIC PROCEDURES'.