

P5F1B Antibody (C-term)

Affinity Purified Rabbit Polyclonal Antibody (Pab)

Catalog # AP10822b

Product Information

Application	FC, WB, E
Primary Accession	Q06416
Other Accession	Q9TSV5 , P20263 , Q01860 , Q97552 , NP_001153014.1
Reactivity	Human
Predicted	Bovine, Mouse, Pig
Host	Rabbit
Clonality	Polyclonal
Isotype	Rabbit IgG
Calculated MW	38588
Antigen Region	214-242

Additional Information

Gene ID	5462
Other Names	Putative POU domain, class 5, transcription factor 1B, Oct4-pg1, Octamer-binding protein 3-like, Octamer-binding transcription factor 3-like, POU5F1B
Target/Specificity	This P5F1B antibody is generated from rabbits immunized with a KLH conjugated synthetic peptide between 214-242 amino acids from the C-terminal region of human P5F1B.
Dilution	FC~~1:10~50 WB~~1:1000 E~~Use at an assay dependent concentration.
Format	Purified polyclonal antibody supplied in PBS with 0.09% (W/V) sodium azide. This antibody is purified through a protein A column, followed by peptide affinity purification.
Storage	Maintain refrigerated at 2-8°C for up to 2 weeks. For long term storage store at -20°C in small aliquots to prevent freeze-thaw cycles.
Precautions	P5F1B Antibody (C-term) is for research use only and not for use in diagnostic or therapeutic procedures.

Protein Information

Name	POU5F1B
Function	Shows weak transcriptional activator activity.

Cellular Location	Nucleus {ECO:0000255 PROSITE-ProRule:PRU00108, ECO:0000255 PROSITE-ProRule:PRU00530, ECO:0000269 PubMed:18949397} Cytoplasm
Tissue Location	Detected in epithelial cells of the prostate (at protein level) (PubMed:20017164). Detected at the mRNA level in several cancer tissues (breast, uterine cervix, lung, thyroid gland, esophagus, colon, urinary bladder, and glioma) (PubMed:16229821, PubMed:21341266)

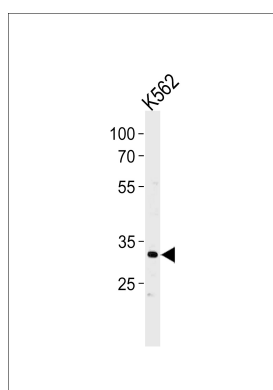
Background

This intronless gene was thought to be a transcribed pseudogene of POU class 5 homeobox 1, however, it has been reported that this gene can encode a functional protein. The encoded protein is nearly the same length as and highly similar to the POU class 5 homeobox 1 transcription factor, has been shown to be a weak transcriptional activator and may play a role in carcinogenesis and eye development.

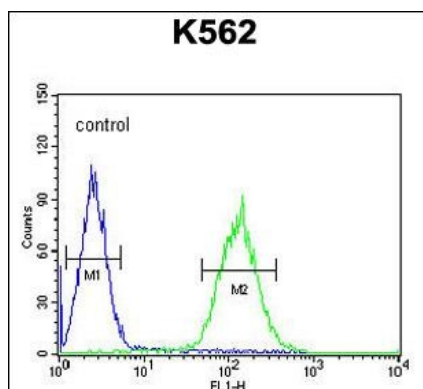
References

Kastler, S., et al. Prostate 70(6):666-674(2010)
 White, K.L., et al. Twin Res Hum Genet 13(1):43-56(2010)
 Crowther-Swanepoel, D., et al. Nat. Genet. 42(2):132-136(2010)
 Gudmundsson, J., et al. Nat. Genet. 41(10):1122-1126(2009)
 Panagopoulos, I., et al. Oncol. Rep. 20(5):1029-1033(2008)

Images



P5F1B Antibody (C-term) (Cat. #AP10822b) western blot analysis in K562 cell line lysates (35ug/lane). This demonstrates the P5F1B antibody detected the P5F1B protein (arrow).



P5F1B Antibody (C-term) (Cat. #AP10822b) flow cytometric analysis of K562 cells (right histogram) compared to a negative control cell (left histogram). FITC-conjugated goat-anti-rabbit secondary antibodies were used for the analysis.

Please note: All products are 'FOR RESEARCH USE ONLY. NOT FOR USE IN DIAGNOSTIC OR THERAPEUTIC PROCEDURES'.