

IMMP1L Antibody (C-term)

Affinity Purified Rabbit Polyclonal Antibody (Pab)

Catalog # AP10836B

Product Information

Application	WB, E
Primary Accession	Q96LU5
Other Accession	Q9CQU8 , NP_659418.1
Reactivity	Human, Mouse
Host	Rabbit
Clonality	Polyclonal
Isotype	Rabbit IgG
Clone Names	RB28019
Calculated MW	18504
Antigen Region	100-127

Additional Information

Gene ID	196294
Other Names	Mitochondrial inner membrane protease subunit 1, 3421-, IMP1-like protein, IMMP1L
Target/Specificity	This IMMP1L antibody is generated from rabbits immunized with a KLH conjugated synthetic peptide between 100-127 amino acids from the C-terminal region of human IMMP1L.
Dilution	WB~~1:1000 E~~Use at an assay dependent concentration.
Format	Purified polyclonal antibody supplied in PBS with 0.09% (W/V) sodium azide. This antibody is purified through a protein A column, followed by peptide affinity purification.
Storage	Maintain refrigerated at 2-8°C for up to 2 weeks. For long term storage store at -20°C in small aliquots to prevent freeze-thaw cycles.
Precautions	IMMP1L Antibody (C-term) is for research use only and not for use in diagnostic or therapeutic procedures.

Protein Information

Name	IMMP1L
Function	Catalyzes the removal of transit peptides required for the targeting of proteins from the mitochondrial matrix, across the inner membrane, into the inter-membrane space. Known to process the nuclear encoded protein

DIABLO.

Cellular Location

Mitochondrion inner membrane

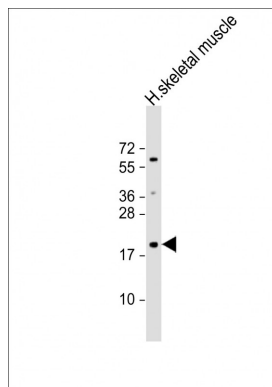
Background

The mitochondrial inner membrane peptidase (IMP) complex generates mature, active proteins in the mitochondrial intermembrane space by proteolytically removing the mitochondrial targeting presequence of nuclear-encoded proteins. IMP1 and IMP2 (IMMP2L; MIM 605977) are the catalytic subunits of the IMP complex (Burri et al., 2005 [PubMed 15814844]).

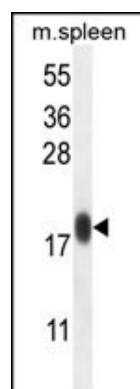
References

Bailey, S.D., et al. Diabetes Care (2010) In press :
Talmud, P.J., et al. Am. J. Hum. Genet. 85(5):628-642(2009)
Taylor, T.D., et al. Nature 440(7083):497-500(2006)
Burri, L., et al. Mol. Biol. Cell 16(6):2926-2933(2005)

Images



Anti-IMMP1L Antibody (C-term) at 1:1000 dilution + human skeletal muscle lysate Lysates/proteins at 20 µg per lane. Secondary Goat Anti-Rabbit IgG, (H+L), Peroxidase conjugated at 1/10000 dilution. Predicted band size : 19 kDa Blocking/Dilution buffer: 5% NFDM/TBST.



IMMP1L Antibody (C-term) (Cat. #AP10836b) western blot analysis in mouse spleen tissue lysates (35ug/lane). This demonstrates the IMMP1L antibody detected the IMMP1L protein (arrow).

Please note: All products are 'FOR RESEARCH USE ONLY. NOT FOR USE IN DIAGNOSTIC OR THERAPEUTIC PROCEDURES'.