

RP11-529I10.4 Antibody (Center)

Affinity Purified Rabbit Polyclonal Antibody (Pab)

Catalog # AP10840c

Product Information

Application	WB, E
Primary Accession	Q9BVM2
Other Accession	NP_056263.1
Reactivity	Human, Mouse
Host	Rabbit
Clonality	Polyclonal
Isotype	Rabbit IgG
Clone Names	RB27182
Calculated MW	23240
Antigen Region	96-136

Additional Information

Gene ID	25911
Other Names	Protein DPCD, DPCD
Target/Specificity	This RP11-529I10.4 antibody is generated from rabbits immunized with a KLH conjugated synthetic peptide between 96-136 amino acids from the Central region of human RP11-529I10.4.
Dilution	WB~~1:1000 E~~Use at an assay dependent concentration.
Format	Purified polyclonal antibody supplied in PBS with 0.09% (W/V) sodium azide. This antibody is purified through a protein A column, followed by peptide affinity purification.
Storage	Maintain refrigerated at 2-8°C for up to 2 weeks. For long term storage store at -20°C in small aliquots to prevent freeze-thaw cycles.
Precautions	RP11-529I10.4 Antibody (Center) is for research use only and not for use in diagnostic or therapeutic procedures.

Protein Information

Name	DPCD
Function	May play a role in the formation or function of ciliated cells.
Tissue Location	Highly expressed in the testis. Weakly expressed in pancreas, skeletal muscle and heart. Expression increases during ciliated cell differentiation.

Background

May play a role in the formation or function of ciliated cells.

References

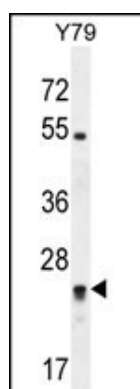
Lamesch, P., et al. Genomics 89(3):307-315(2007)

Ewing, R.M., et al. Mol. Syst. Biol. 3, 89 (2007) :

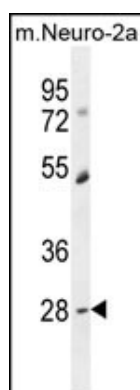
Grupe, A., et al. Am. J. Hum. Genet. 78(1):78-88(2006)

Zariwala, M., et al. Am. J. Respir. Cell Mol. Biol. 30(4):428-434(2004)

Images



RP11-529I10.4 Antibody (Center) (Cat. #AP10840c)
western blot analysis in Y79 cell line lysates
(35ug/lane). This demonstrates the RP11 antibody
detected the RP11 protein (arrow).



RP11-529I10.4 Antibody (Center) (Cat. #AP10840c)
western blot analysis in mouse Neuro-2a cell line lysates
(35ug/lane). This demonstrates the RP11 antibody
detected the RP11 protein (arrow).

Please note: All products are 'FOR RESEARCH USE ONLY. NOT FOR USE IN DIAGNOSTIC OR THERAPEUTIC PROCEDURES'.