

BCORL1 Antibody (N-term)

Affinity Purified Rabbit Polyclonal Antibody (Pab)

Catalog # AP10847a

Product Information

Application	WB, IHC-P, FC, E
Primary Accession	Q5H9F3
Other Accession	NP_068765.2
Reactivity	Human, Rat, Mouse
Host	Rabbit
Clonality	Polyclonal
Isotype	Rabbit IgG
Clone Names	RB28042
Calculated MW	190561
Antigen Region	69-98

Additional Information

Gene ID	63035
Other Names	BCL-6 corepressor-like protein 1, BCoR-L1, BCoR-like protein 1, BCORL1
Target/Specificity	This BCORL1 antibody is generated from rabbits immunized with a KLH conjugated synthetic peptide between 69-98 amino acids from the N-terminal region of human BCORL1.
Dilution	WB~~1:500 IHC-P~~1:100~500 FC~~1:10~50 E~~Use at an assay dependent concentration.
Format	Purified polyclonal antibody supplied in PBS with 0.09% (W/V) sodium azide. This antibody is purified through a protein A column, followed by peptide affinity purification.
Storage	Maintain refrigerated at 2-8°C for up to 2 weeks. For long term storage store at -20°C in small aliquots to prevent freeze-thaw cycles.
Precautions	BCORL1 Antibody (N-term) is for research use only and not for use in diagnostic or therapeutic procedures.

Protein Information

Name	BCORL1 (HGNC:25657)
Function	Transcriptional corepressor. May specifically inhibit gene expression when recruited to promoter regions by sequence-specific DNA- binding proteins such as BCL6. This repression may be mediated at least in part by histone

deacetylase activities which can associate with this corepressor.

Cellular Location

Nucleus

Tissue Location

Detected in testis and prostate. Detected at lower levels in peripheral blood leukocytes and spleen. Mainly expressed in the spermatogonia and primary spermatocytes (PubMed:38342987)

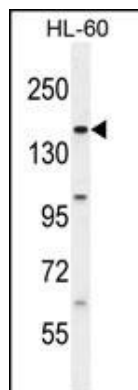
Background

The protein encoded by this gene is a transcriptional corepressor that is found tethered to promoter regions by DNA-binding proteins. The encoded protein can interact with several different class II histone deacetylases to repress transcription. Two transcript variants encoding different isoforms have been found for this gene.

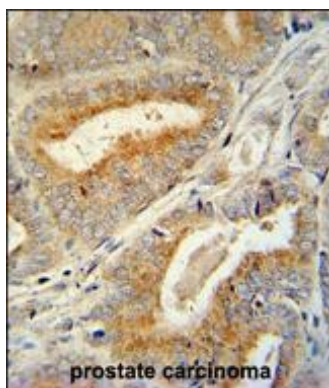
References

Pagan, J.K., et al. J. Biol. Chem. 282(20):15248-15257(2007)
Lose, F., et al. Breast Cancer Res. 9 (4), R54 (2007) :

Images

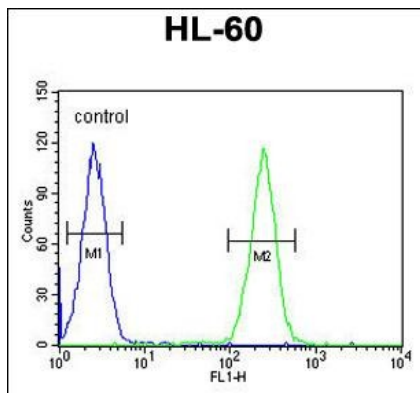


BCORL1 Antibody (N-term) (Cat. #AP10847a) western blot analysis in HL-60 cell line lysates (35ug/lane). This demonstrates the BCORL1 antibody detected the BCORL1 protein (arrow).



BCORL1 antibody (N-term) (Cat. #AP10847a) immunohistochemistry analysis in formalin fixed and paraffin embedded human prostate carcinoma followed by peroxidase conjugation of the secondary antibody and DAB staining. This data demonstrates the use of the BCORL1 antibody (N-term) for immunohistochemistry. Clinical relevance has not been evaluated.

BCORL1 Antibody (N-term) (Cat. #AP10847a) flow cytometric analysis of HL-60 cells (right histogram) compared to a negative control cell (left histogram). FITC-conjugated goat-anti-rabbit secondary antibodies were used for the analysis.



Please note: All products are 'FOR RESEARCH USE ONLY. NOT FOR USE IN DIAGNOSTIC OR THERAPEUTIC PROCEDURES'.