

KLHDC1 Antibody (N-term)

Affinity Purified Rabbit Polyclonal Antibody (Pab)

Catalog # AP10855A

Product Information

Application	WB, IHC-P, E
Primary Accession	Q8N7A1
Other Accession	Q80YG3 , NP_751943.1
Reactivity	Human, Mouse
Host	Rabbit
Clonality	Polyclonal
Isotype	Rabbit IgG
Clone Names	RB27960
Calculated MW	46720
Antigen Region	69-97

Additional Information

Gene ID	122773
Other Names	Kelch domain-containing protein 1, KLHDC1
Target/Specificity	This KLHDC1 antibody is generated from rabbits immunized with a KLH conjugated synthetic peptide between 69-97 amino acids from the N-terminal region of human KLHDC1.
Dilution	WB~~1:1000 IHC-P~~1:100~500 E~~Use at an assay dependent concentration.
Format	Purified polyclonal antibody supplied in PBS with 0.09% (W/V) sodium azide. This antibody is purified through a protein A column, followed by peptide affinity purification.
Storage	Maintain refrigerated at 2-8°C for up to 2 weeks. For long term storage store at -20°C in small aliquots to prevent freeze-thaw cycles.
Precautions	KLHDC1 Antibody (N-term) is for research use only and not for use in diagnostic or therapeutic procedures.

Protein Information

Name	KLHDC1 {ECO:0000303 PubMed:16964437, ECO:0000312 HGNC:HGNC:19836}
Function	Substrate-recognition component of a Cul5-RING (CRL5) E3 ubiquitin-protein ligase complex of the DesCEND (destruction via C-end degrons) pathway, which recognizes a C-degron located at the extreme C

terminus of target proteins, leading to their ubiquitination and degradation (PubMed:[32200094](#)). The C-degron recognized by the DesCEND pathway is usually a motif of less than ten residues and can be present in full-length proteins, truncated proteins or proteolytically cleaved forms (PubMed:[32200094](#)). The CRL5(KLHDC1) complex mediates ubiquitination and degradation of truncated SELENOS selenoprotein produced by failed UGA/Sec decoding, which ends with a glycine (PubMed:[32200094](#)).

Cellular Location

Cytoplasm, cytosol

Tissue Location

Widely expressed, with high levels in skeletal muscle, pancreas and liver. Undetectable in peripheral blood leukocytes.

Background

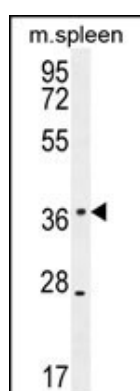
KLHDC1 contains 6 Kelch repeats and is widely expressed, with high levels in skeletal muscle, pancreas and liver. KLHDC1 and KLHDC2 have differential localization and activity in cultured mammalian cells. The exact function of KLHDC1 remains unknown.

References

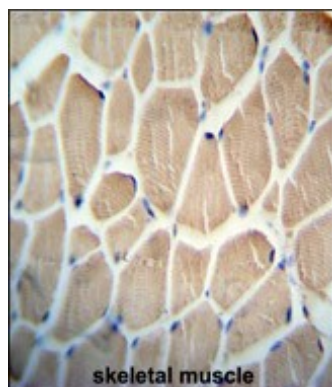
Feng, T., et al. Hum. Genet. 128(3):269-280(2010)

Chin, K.T., et al. Mol. Cell. Biochem. 296 (1-2), 109-119 (2007) :

Images



KLHDC1 Antibody (N-term) (Cat. #AP10855a) western blot analysis in mouse spleen tissue lysates (35ug/lane). This demonstrates the KLHDC1 antibody detected the KLHDC1 protein (arrow).



KLHDC1 antibody (N-term) (Cat. #AP10855a) immunohistochemistry analysis in formalin fixed and paraffin embedded human skeletal muscle followed by peroxidase conjugation of the secondary antibody and DAB staining. This data demonstrates the use of the KLHDC1 antibody (N-term) for immunohistochemistry. Clinical relevance has not been evaluated.

Please note: All products are 'FOR RESEARCH USE ONLY. NOT FOR USE IN DIAGNOSTIC OR THERAPEUTIC PROCEDURES'.