

# MCART2 Antibody (N-term)

Affinity Purified Rabbit Polyclonal Antibody (Pab)

Catalog # AP10890a

## Product Information

---

Application	WB, FC, E
Primary Accession	<a href="#">Q3SY17</a>
Other Accession	<a href="#">NP_001029344.2</a>
Reactivity	Human
Host	Rabbit
Clonality	Polyclonal
Isotype	Rabbit IgG
Clone Names	RB28424
Calculated MW	33721
Antigen Region	46-75

## Additional Information

---

Gene ID	147407
Other Names	Solute carrier family 25 member 52, Mitochondrial carrier triple repeat protein 2, SLC25A52, MCART2
Target/Specificity	This MCART2 antibody is generated from rabbits immunized with a KLH conjugated synthetic peptide between 46-75 amino acids from the N-terminal region of human MCART2.
Dilution	WB~~1:1000 FC~~1:10~50 E~~Use at an assay dependent concentration.
Format	Purified polyclonal antibody supplied in PBS with 0.09% (W/V) sodium azide. This antibody is purified through a protein A column, followed by peptide affinity purification.
Storage	Maintain refrigerated at 2-8°C for up to 2 weeks. For long term storage store at -20°C in small aliquots to prevent freeze-thaw cycles.
Precautions	MCART2 Antibody (N-term) is for research use only and not for use in diagnostic or therapeutic procedures.

## Protein Information

---

Name	SLC25A52 {ECO:0000303   PubMed:32906142, ECO:0000312   HGNC:HGNC:23324}
Function	Mitochondrial membrane carrier protein that mediates the import of NAD(+) into mitochondria (PubMed: <a href="#">32906142</a> ). Compared to SLC25A51,

SLC25A52-mediated transport is not essential for the import of NAD(+) in mitochondria (PubMed:[32906142](#)). The transport mechanism, uniport or antiport, its electrogenicity and substrate selectivity, remain to be elucidated.

## Cellular Location

Mitochondrion inner membrane; Multi-pass membrane protein

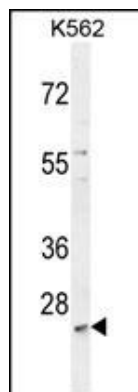
## Background

This gene is similar to the mitochondrial carrier triple repeat 1 gene on chromosome 9. The gene is intronless and may be an evolving pseudogene; however, it is transcribed and it contains a full-length coding region so it is currently classified as a protein-coding locus.

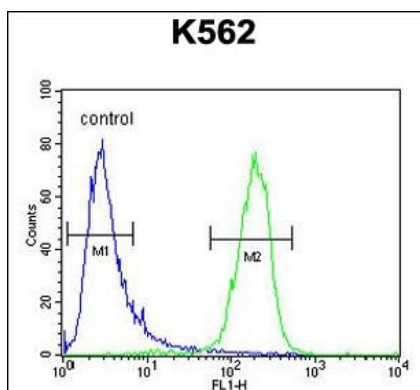
## References

Kimura, K., et al. Genome Res. 16(1):55-65(2006)  
Gerhard, D.S., et al. Genome Res. 14 (10B), 2121-2127 (2004) :

## Images



MCART2 Antibody (N-term) (Cat. #AP10890a) western blot analysis in K562 cell line lysates (35ug/lane). This demonstrates the MCART2 antibody detected the MCART2 protein (arrow).



MCART2 Antibody (N-term) (Cat. #AP10890a) flow cytometric analysis of K562 cells (right histogram) compared to a negative control cell (left histogram). FITC-conjugated goat-anti-rabbit secondary antibodies were used for the analysis.

Please note: All products are 'FOR RESEARCH USE ONLY. NOT FOR USE IN DIAGNOSTIC OR THERAPEUTIC PROCEDURES'.