

OR52D1 Antibody (C-term)

Affinity Purified Rabbit Polyclonal Antibody (Pab)

Catalog # AP10897b

Product Information

Application	WB, FC, E
Primary Accession	Q9H346
Other Accession	NP_001005163.1
Reactivity	Human
Host	Rabbit
Clonality	Polyclonal
Isotype	Rabbit IgG
Clone Names	RB28509
Calculated MW	35122
Antigen Region	248-277

Additional Information

Gene ID	390066
Other Names	Olfactory receptor 52D1, Odorant receptor HOR5'beta14, Olfactory receptor OR11-43, OR52D1
Target/Specificity	This OR52D1 antibody is generated from rabbits immunized with a KLH conjugated synthetic peptide between 248-277 amino acids from the C-terminal region of human OR52D1.
Dilution	WB~~1:1000 FC~~1:10~50 E~~Use at an assay dependent concentration.
Format	Purified polyclonal antibody supplied in PBS with 0.09% (W/V) sodium azide. This antibody is purified through a protein A column, followed by peptide affinity purification.
Storage	Maintain refrigerated at 2-8°C for up to 2 weeks. For long term storage store at -20°C in small aliquots to prevent freeze-thaw cycles.
Precautions	OR52D1 Antibody (C-term) is for research use only and not for use in diagnostic or therapeutic procedures.

Protein Information

Name	OR52D1
Function	Odorant receptor.
Cellular Location	Cell membrane; Multi-pass membrane protein.

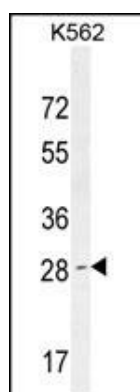
Background

Olfactory receptors interact with odorant molecules in the nose, to initiate a neuronal response that triggers the perception of a smell. The olfactory receptor proteins are members of a large family of G-protein-coupled receptors (GPCR) arising from single coding-exon genes. Olfactory receptors share a 7-transmembrane domain structure with many neurotransmitter and hormone receptors and are responsible for the recognition and G protein-mediated transduction of odorant signals. The olfactory receptor gene family is the largest in the genome. The nomenclature assigned to the olfactory receptor genes and proteins for this organism is independent of other organisms.

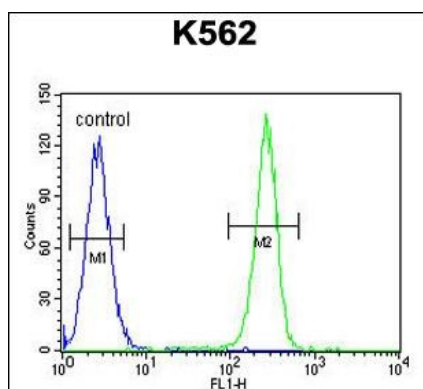
References

Shimada, M., et al. Hum. Genet. 128(4):433-441(2010)
Malnic, B., et al. Proc. Natl. Acad. Sci. U.S.A. 101(8):2584-2589(2004)
Bulger, M., et al. Proc. Natl. Acad. Sci. U.S.A. 97(26):14560-14565(2000)
Bulger, M., et al. Proc. Natl. Acad. Sci. U.S.A. 96(9):5129-5134(1999)

Images



OR52D1 Antibody (C-term) (Cat. #AP10897b) western blot analysis in K562 cell line lysates (35ug/lane). This demonstrates the OR52D1 antibody detected the OR52D1 protein (arrow).



OR52D1 Antibody (C-term) (Cat. #AP10897b) flow cytometric analysis of K562 cells (right histogram) compared to a negative control cell (left histogram). FITC-conjugated goat-anti-rabbit secondary antibodies were used for the analysis.

Please note: All products are 'FOR RESEARCH USE ONLY. NOT FOR USE IN DIAGNOSTIC OR THERAPEUTIC PROCEDURES'.