

AMN1 Antibody (N-term)

Affinity Purified Rabbit Polyclonal Antibody (Pab)

Catalog # AP10901a

Product Information

Application	FC, WB, E
Primary Accession	Q8IY45
Other Accession	Q32L08 , NP_001106873.1
Reactivity	Human
Predicted	Bovine
Host	Rabbit
Clonality	Polyclonal
Isotype	Rabbit IgG
Clone Names	RB28526
Calculated MW	28408
Antigen Region	13-42

Additional Information

Gene ID	196394
Other Names	Protein AMN1 homolog, AMN1
Target/Specificity	This AMN1 antibody is generated from rabbits immunized with a KLH conjugated synthetic peptide between 13-42 amino acids from the N-terminal region of human AMN1.
Dilution	FC~~1:10~50 WB~~1:1000 E~~Use at an assay dependent concentration.
Format	Purified polyclonal antibody supplied in PBS with 0.09% (W/V) sodium azide. This antibody is purified through a protein A column, followed by peptide affinity purification.
Storage	Maintain refrigerated at 2-8°C for up to 2 weeks. For long term storage store at -20°C in small aliquots to prevent freeze-thaw cycles.
Precautions	AMN1 Antibody (N-term) is for research use only and not for use in diagnostic or therapeutic procedures.

Protein Information

Name	AMN1
------	------

Background

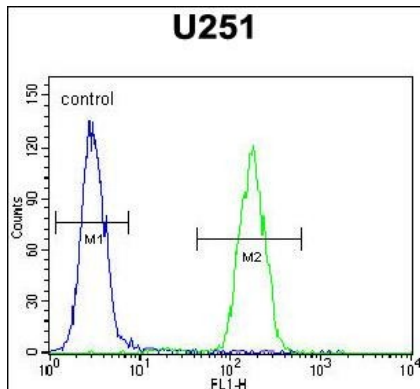
AMN1 belongs to the AMN1 family. The exact function of AMN1 remains unknown.

References

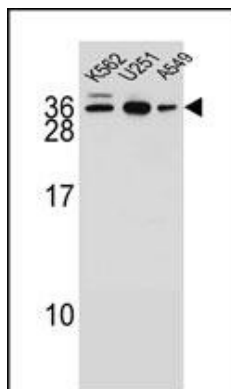
Ota, T., et al. Nat. Genet. 36(1):40-45(2004)

Strausberg, R.L., et al. Proc. Natl. Acad. Sci. U.S.A. 99(26):16899-16903(2002)

Images



AMN1 Antibody (N-term) (Cat. #AP10901a) flow cytometric analysis of U251 cells (right histogram) compared to a negative control cell (left histogram). FITC-conjugated goat-anti-rabbit secondary antibodies were used for the analysis.



AMN1 Antibody (N-term) (Cat. #AP10901a) western blot analysis in K562, U251, A549 cell line lysates (35ug/lane). This demonstrates the AMN1 antibody detected the AMN1 protein (arrow).

Please note: All products are 'FOR RESEARCH USE ONLY. NOT FOR USE IN DIAGNOSTIC OR THERAPEUTIC PROCEDURES'.