

# EFHB Antibody (N-term)

Affinity Purified Rabbit Polyclonal Antibody (Pab)

Catalog # AP10904a

## Product Information

---

Application	WB, IHC-P, FC, E
Primary Accession	<a href="#">Q8N7U6</a>
Other Accession	<a href="#">NP_653316.3</a>
Reactivity	Human
Host	Rabbit
Clonality	Polyclonal
Isotype	Rabbit IgG
Clone Names	RB28585
Calculated MW	93802
Antigen Region	1-30

## Additional Information

---

Gene ID	151651
Other Names	EF-hand domain-containing family member B, EFHB
Target/Specificity	This EFHB antibody is generated from rabbits immunized with a KLH conjugated synthetic peptide between 1-30 amino acids from the N-terminal region of human EFHB.
Dilution	WB~~1:1000 IHC-P~~1:100~500 FC~~1:10~50 E~~Use at an assay dependent concentration.
Format	Purified polyclonal antibody supplied in PBS with 0.09% (W/V) sodium azide. This antibody is purified through a protein A column, followed by peptide affinity purification.
Storage	Maintain refrigerated at 2-8°C for up to 2 weeks. For long term storage store at -20°C in small aliquots to prevent freeze-thaw cycles.
Precautions	EFHB Antibody (N-term) is for research use only and not for use in diagnostic or therapeutic procedures.

## Protein Information

---

Name	EFHB ( <a href="#">HGNC:26330</a> )
Synonyms	CFAP21
Function	Microtubule inner protein (MIP) part of the dynein-decorated doublet

microtubules (DMTs) in cilia axoneme, which is required for motile cilia beating (PubMed:[36191189](#)). Cytosolic sensor for calcium, modulates the interaction of STIM1 and ORAI1 upon store depletion and the activation of store-operated Ca(2+) entry (SOCE) and NFAT translocation from cytosol to nucleus (PubMed:[30481768](#)).

<b>Cellular Location</b>	Cytoplasm, cytoskeleton, cilium axoneme. Cytoplasm, cytoskeleton, flagellum axoneme {ECO:0000250 UniProtKB:Q8CDU5}. Cytoplasm
<b>Tissue Location</b>	Expressed in airway epithelial cells.

## Background

---

EFHB contains two EF-hand domains. There are three named isoforms.

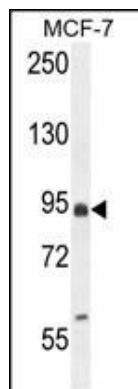
## References

---

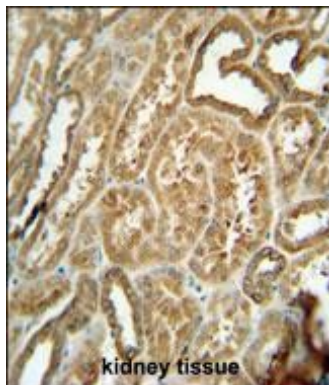
Rose, J. Phd, et al. Mol. Med. (2010) In press :

## Images

---

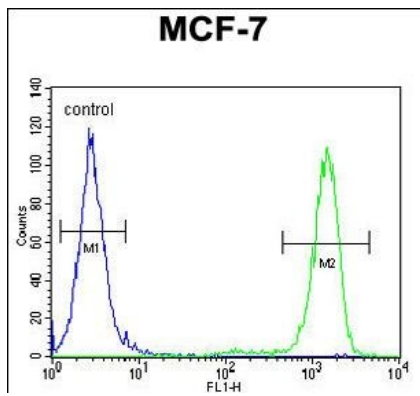


EFHB Antibody (N-term) (Cat. #AP10904a) western blot analysis in MCF-7 cell line lysates (35ug/lane). This demonstrates the EFHB antibody detected the EFHB protein (arrow).



EFHB antibody (N-term) (Cat. #AP10904a) immunohistochemistry analysis in formalin fixed and paraffin embedded human kidney tissue followed by peroxidase conjugation of the secondary antibody and DAB staining. This data demonstrates the use of the EFHB antibody (N-term) for immunohistochemistry. Clinical relevance has not been evaluated.

EFHB Antibody (N-term) (Cat. #AP10904a) flow cytometric analysis of MCF-7 cells (right histogram) compared to a negative control cell (left histogram). FITC-conjugated goat-anti-rabbit secondary antibodies were used for the analysis.



## Citations

---

- [EFHB is a Novel Cytosolic Ca<sup>2+</sup> Sensor That Modulates STIM1-SARAF Interaction.](#)

Please note: All products are 'FOR RESEARCH USE ONLY. NOT FOR USE IN DIAGNOSTIC OR THERAPEUTIC PROCEDURES'.