

# IQCJ Antibody (C-term)

Affinity Purified Rabbit Polyclonal Antibody (Pab)

Catalog # AP10910b

## Product Information

---

Application	WB, IHC-P, FC, E
Primary Accession	<a href="#">Q1A5X6</a>
Other Accession	<a href="#">NP_001036170.1</a>
Reactivity	Human, Mouse
Host	Rabbit
Clonality	Polyclonal
Isotype	Rabbit IgG
Clone Names	RB28731
Calculated MW	18226
Antigen Region	98-126

## Additional Information

---

Gene ID	654502
Other Names	IQ domain-containing protein J, IQCJ
Target/Specificity	This IQCJ antibody is generated from rabbits immunized with a KLH conjugated synthetic peptide between 98-126 amino acids from the C-terminal region of human IQCJ.
Dilution	WB~~1:1000 IHC-P~~1:100~500 FC~~1:10~50 E~~Use at an assay dependent concentration.
Format	Purified polyclonal antibody supplied in PBS with 0.09% (W/V) sodium azide. This antibody is purified through a protein A column, followed by peptide affinity purification.
Storage	Maintain refrigerated at 2-8°C for up to 2 weeks. For long term storage store at -20°C in small aliquots to prevent freeze-thaw cycles.
Precautions	IQCJ Antibody (C-term) is for research use only and not for use in diagnostic or therapeutic procedures.

## Protein Information

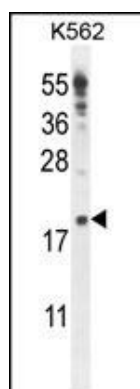
---

Name	IQCJ ( <a href="#">HGNC:32406</a> )
------	-------------------------------------

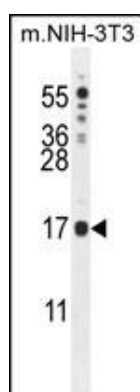
## References

---

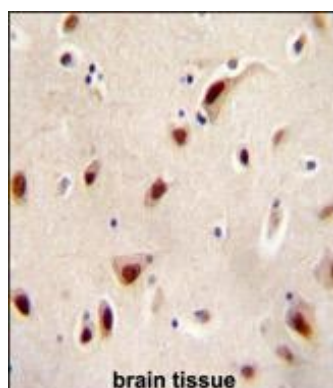
## Images



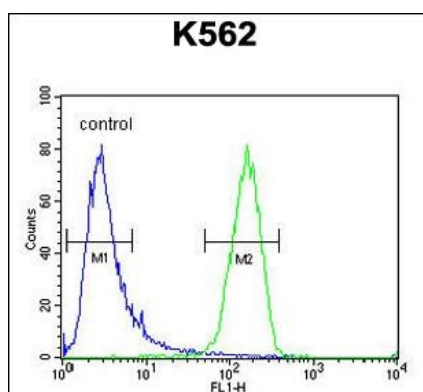
IQCJ Antibody (C-term) (Cat. #AP10910b) western blot analysis in K562 cell line lysates (35ug/lane). This demonstrates the IQCJ antibody detected the IQCJ protein (arrow).



IQCJ Antibody (C-term) (Cat. #AP10910b) western blot analysis in mouse NIH-3T3 cell line lysates (35ug/lane). This demonstrates the IQCJ antibody detected the IQCJ protein (arrow).



IQCJ Antibody (C-term) (Cat. #AP10910b) immunohistochemistry analysis in formalin fixed and paraffin embedded human brain tissue followed by peroxidase conjugation of the secondary antibody and DAB staining. This data demonstrates the use of the IQCJ Antibody (C-term) for immunohistochemistry. Clinical relevance has not been evaluated.



IQCJ Antibody (C-term) (Cat. #AP10910b) flow cytometric analysis of K562 cells (right histogram) compared to a negative control cell (left histogram). FITC-conjugated goat-anti-rabbit secondary antibodies were used for the analysis.