

NKPD1 Antibody (C-term)

Affinity Purified Rabbit Polyclonal Antibody (Pab)

Catalog # AP10916b

Product Information

Application	WB, FC, E
Primary Accession	Q17RQ9
Other Accession	NP_940880.2
Reactivity	Human, Mouse
Host	Rabbit
Clonality	Polyclonal
Isotype	Rabbit IgG
Clone Names	RB28758
Calculated MW	67780
Antigen Region	532-560

Additional Information

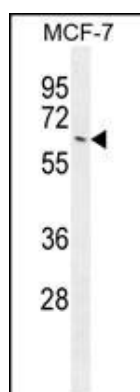
Other Names	NTPase KAP family P-loop domain-containing protein 1, NKPD1
Target/Specificity	This NKPD1 antibody is generated from rabbits immunized with a KLH conjugated synthetic peptide between 532-560 amino acids from the C-terminal region of human NKPD1.
Dilution	WB~~1:1000 FC~~1:10~50 E~~Use at an assay dependent concentration.
Format	Purified polyclonal antibody supplied in PBS with 0.09% (W/V) sodium azide. This antibody is purified through a protein A column, followed by peptide affinity purification.
Storage	Maintain refrigerated at 2-8°C for up to 2 weeks. For long term storage store at -20°C in small aliquots to prevent freeze-thaw cycles.
Precautions	NKPD1 Antibody (C-term) is for research use only and not for use in diagnostic or therapeutic procedures.

Protein Information

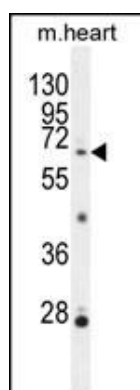
Name	NKPD1
Cellular Location	Membrane; Multi-pass membrane protein

References

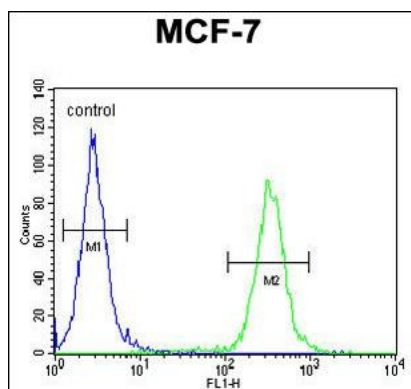
Images



NKPD1 Antibody (C-term) (Cat. #AP10916b) western blot analysis in MCF-7 cell line lysates (35ug/lane). This demonstrates the NKPD1 antibody detected the NKPD1 protein (arrow).



NKPD1 Antibody (C-term) (Cat. #AP10916b) western blot analysis in mouse heart tissue lysates (35ug/lane). This demonstrates the NKPD1 antibody detected the NKPD1 protein (arrow).



NKPD1 Antibody (C-term) (Cat. #AP10916b) flow cytometric analysis of MCF-7 cells (right histogram) compared to a negative control cell (left histogram). FITC-conjugated goat-anti-rabbit secondary antibodies were used for the analysis.

Please note: All products are 'FOR RESEARCH USE ONLY. NOT FOR USE IN DIAGNOSTIC OR THERAPEUTIC PROCEDURES'.