

CTBP1 Antibody (C-term)

Affinity Purified Rabbit Polyclonal Antibody (Pab)

Catalog # AP10926B

Product Information

Application	WB, E
Primary Accession	Q13363
Other Accession	NP_001319.1
Reactivity	Human, Rat, Mouse
Host	Rabbit
Clonality	Polyclonal
Isotype	Rabbit IgG
Clone Names	RB28436
Calculated MW	47535
Antigen Region	409-438

Additional Information

Gene ID	1487
Other Names	C-terminal-binding protein 1, CtBP1, 111-, CTBP1, CTBP
Target/Specificity	This CTBP1 antibody is generated from rabbits immunized with a KLH conjugated synthetic peptide between 409-438 amino acids from the C-terminal region of human CTBP1.
Dilution	WB~~1:1000 E~~Use at an assay dependent concentration.
Format	Purified polyclonal antibody supplied in PBS with 0.09% (W/V) sodium azide. This antibody is purified through a protein A column, followed by peptide affinity purification.
Storage	Maintain refrigerated at 2-8°C for up to 2 weeks. For long term storage store at -20°C in small aliquots to prevent freeze-thaw cycles.
Precautions	CTBP1 Antibody (C-term) is for research use only and not for use in diagnostic or therapeutic procedures.

Protein Information

Name	CTBP1
Synonyms	CTBP
Function	Corepressor targeting diverse transcription regulators such as GLIS2 or BCL6. Has dehydrogenase activity. Involved in controlling the equilibrium

between tubular and stacked structures in the Golgi complex. Functions in brown adipose tissue (BAT) differentiation.

Cellular Location	Cytoplasm. Nucleus
Tissue Location	Expressed in germinal center B-cells.

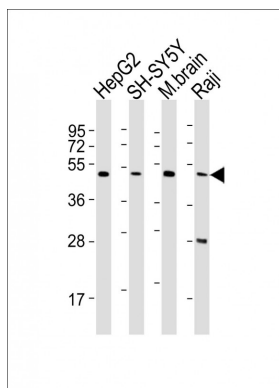
Background

This gene encodes a protein that binds to the C-terminus of adenovirus E1A proteins. This phosphoprotein is a transcriptional repressor and may play a role during cellular proliferation. This protein and the product of a second closely related gene, CTBP2, can dimerize. Both proteins can also interact with a polycomb group protein complex which participates in regulation of gene expression during development. Alternative splicing of transcripts from this gene results in multiple transcript variants.

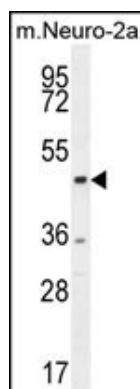
References

Roukens, M.G., et al. Nat. Cell Biol. 12(10):933-942(2010)
Choi, H.J., et al. Biochem. Biophys. Res. Commun. 400(3):396-402(2010)
Merrill, J.C., et al. J. Mol. Biol. 398(5):657-671(2010)
Davila, S., et al. Genes Immun. 11(3):232-238(2010)
Yoshida, T., et al. Int. J. Mol. Med. 25(4):649-656(2010)

Images



All lanes : Anti-CTBP1 Antibody (C-term) at 1:2000 dilution
Lane 1: HepG2 whole cell lysates Lane 2: SH-SY5Y whole cell lysates Lane 3: mouse brain lysates Lane 4: Raji whole cell lysates Lysates/proteins at 20 µg per lane. Secondary Goat Anti-Rabbit IgG, (H+L), Peroxidase conjugated at 1/10000 dilution Predicted band size : 48 kDa
Blocking/Dilution buffer: 5% NFDM/TBST.



CTBP1 Antibody (C-term) (Cat. #AP10926b) western blot analysis in mouse Neuro-2a cell line lysates (35ug/lane). This demonstrates the CTBP1 antibody detected the CTBP1 protein (arrow).

Please note: All products are 'FOR RESEARCH USE ONLY. NOT FOR USE IN DIAGNOSTIC OR THERAPEUTIC PROCEDURES'.