

CTDSPL2 Antibody (N-term)

Affinity Purified Rabbit Polyclonal Antibody (Pab)

Catalog # AP10938a

Product Information

Application	WB, FC, E
Primary Accession	Q05D32
Other Accession	Q5XIK8 , Q8BG15 , NP_057480.2
Reactivity	Human, Mouse
Predicted	Rat
Host	Rabbit
Clonality	Polyclonal
Isotype	Rabbit IgG
Clone Names	RB30136
Calculated MW	52999
Antigen Region	52-80

Additional Information

Gene ID	51496
Other Names	CTD small phosphatase-like protein 2, CTDSP-like 2, 313-, CTDSPL2
Target/Specificity	This CTDSPL2 antibody is generated from rabbits immunized with a KLH conjugated synthetic peptide between 52-80 amino acids from the N-terminal region of human CTDSPL2.
Dilution	WB~~1:1000 FC~~1:10~50 E~~Use at an assay dependent concentration.
Format	Purified polyclonal antibody supplied in PBS with 0.09% (W/V) sodium azide. This antibody is purified through a protein A column, followed by peptide affinity purification.
Storage	Maintain refrigerated at 2-8°C for up to 2 weeks. For long term storage store at -20°C in small aliquots to prevent freeze-thaw cycles.
Precautions	CTDSPL2 Antibody (N-term) is for research use only and not for use in diagnostic or therapeutic procedures.

Protein Information

Name	CTDSPL2
Function	Probable phosphatase.

Background

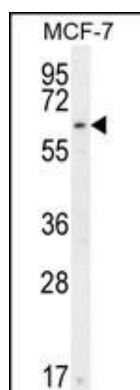
Probable phosphatase (By similarity).

References

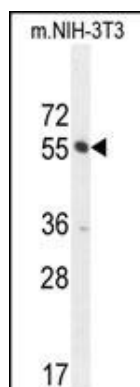
Olsen, J.V., et al. Cell 127(3):635-648(2006)

Kimura, K., et al. Genome Res. 16(1):55-65(2006)

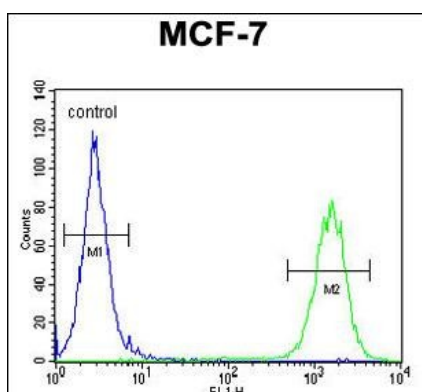
Images



CTDSPL2 Antibody (N-term) (Cat. #AP10938a) western blot analysis in MCF-7 cell line lysates (35ug/lane). This demonstrates the CTDSPL2 antibody detected the CTDSPL2 protein (arrow).



CTDSPL2 Antibody (N-term) (Cat. #AP10938a) western blot analysis in mouse NIH-3T3 cell line lysates (35ug/lane). This demonstrates the CTDSPL2 antibody detected the CTDSPL2 protein (arrow).



CTDSPL2 Antibody (N-term) (Cat. #AP10938a) flow cytometric analysis of MCF-7 cells (right histogram) compared to a negative control cell (left histogram). FITC-conjugated goat-anti-rabbit secondary antibodies were used for the analysis.

Please note: All products are 'FOR RESEARCH USE ONLY. NOT FOR USE IN DIAGNOSTIC OR THERAPEUTIC PROCEDURES'.