

CENTG1 Antibody (C-term)

Affinity Purified Rabbit Polyclonal Antibody (Pab)

Catalog # AP10947b

Product Information

Application	WB, E
Primary Accession	Q99490
Other Accession	Q8CGU4 , Q3UHD9 , NP_001116244.1 , NP_055585.1
Reactivity	Human, Rat, Mouse
Predicted	Rat
Host	Rabbit
Clonality	Polyclonal
Isotype	Rabbit IgG
Clone Names	RB19565
Calculated MW	124591
Antigen Region	850-877

Additional Information

Gene ID	116986
Other Names	Arf-GAP with GTPase, ANK repeat and PH domain-containing protein 2, AGAP-2, Centaurin-gamma-1, Cnt-g1, GTP-binding and GTPase-activating protein 2, GGAP2, Phosphatidylinositol 3-kinase enhancer, PIKE, AGAP2, CENTG1, KIAA0167
Target/Specificity	This CENTG1 antibody is generated from rabbits immunized with a KLH conjugated synthetic peptide between 850-877 amino acids from the C-terminal region of human CENTG1.
Dilution	WB~~1:1000 E~~Use at an assay dependent concentration.
Format	Purified polyclonal antibody supplied in PBS with 0.09% (W/V) sodium azide. This antibody is purified through a protein A column, followed by peptide affinity purification.
Storage	Maintain refrigerated at 2-8°C for up to 2 weeks. For long term storage store at -20°C in small aliquots to prevent freeze-thaw cycles.
Precautions	CENTG1 Antibody (C-term) is for research use only and not for use in diagnostic or therapeutic procedures.

Protein Information

Name	AGAP2
-------------	-------

Synonyms	CENTG1, KIAA0167
Function	GTPase-activating protein (GAP) for ARF1 and ARF5, which also shows strong GTPase activity. Isoform 1 participates in the prevention of neuronal apoptosis by enhancing PI3 kinase activity. It aids the coupling of metabotropic glutamate receptor 1 (GRM1) to cytoplasmic PI3 kinase by interacting with Homer scaffolding proteins, and also seems to mediate anti-apoptotic effects of NGF by activating nuclear PI3 kinase. Isoform 2 does not stimulate PI3 kinase but may protect cells from apoptosis by stimulating Akt. It also regulates the adapter protein 1 (AP-1)-dependent trafficking of proteins in the endosomal system. It seems to be oncogenic. It is overexpressed in cancer cells, prevents apoptosis and promotes cancer cell invasion.
Cellular Location	[Isoform 1]: Cytoplasm. Nucleus.
Tissue Location	Isoform 1 is brain-specific. Isoform 2 is ubiquitously expressed, with highest levels in brain and heart

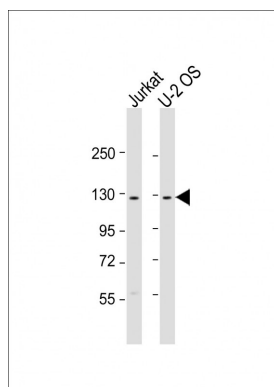
Background

GTPase-activating protein (GAP) for ARF1 and ARF5, which also shows strong GTPase activity. Isoform 1 participates in the prevention of neuronal apoptosis by enhancing PI3 kinase activity. It aids the coupling of metabotropic glutamate receptor 1 (GRM1) to cytoplasmic PI3 kinase by interacting with Homer scaffolding proteins, and also seems to mediate anti-apoptotic effects of NGF by activating nuclear PI3 kinase. Isoform 2 does not stimulate PI3 kinase but may protect cells from apoptosis by stimulating Akt. It also regulates the adapter protein 1 (AP-1)-dependent trafficking of proteins in the endosomal system. It seems to be oncogenic. It is overexpressed in cancer cells, prevents apoptosis and promotes cancer cell invasion.

References

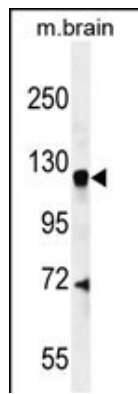
Shiba, Y., et al. J. Cell. Sci. 123 (PT 14), 2381-2390 (2010) :
Zhu, Y., et al. J. Biol. Chem. 284(20):13489-13496(2009)
Cai, Y., et al. Cancer Res. 69(3):819-827(2009)
Tang, X., et al. Nat. Cell Biol. 10(6):698-706(2008)
Liu, R., et al. Proc. Natl. Acad. Sci. U.S.A. 105(21):7570-7575(2008)

Images



All lanes : Anti-CENTG1 Antibody (C-term) at 1:2000 dilution
Lane 1: Jurkat whole cell lysate
Lane 2: U-2 OS whole cell lysate
Lysates/proteins at 20 µg per lane.
Secondary Goat Anti-Rabbit IgG, (H+L), Peroxidase conjugated at 1/10000 dilution. Predicted band size : 125 kDa
Blocking/Dilution buffer: 5% NFDM/TBST.

CENTG1 Antibody (C-term) (Cat. #AP10947b) western blot analysis in mouse brain tissue lysates (35µg/lane). This demonstrates the CENTG1 antibody detected the CENTG1 protein (arrow).



Please note: All products are 'FOR RESEARCH USE ONLY. NOT FOR USE IN DIAGNOSTIC OR THERAPEUTIC PROCEDURES'.