

# KIAA1324L Antibody (N-term)

Affinity Purified Rabbit Polyclonal Antibody (Pab)  
Catalog # AP10971a

## Product Information

---

<b>Application</b>	WB, IHC-P, FC, E
<b>Primary Accession</b>	<a href="#">A8MWY0</a>
<b>Other Accession</b>	<a href="#">A7E2Z9</a> , <a href="#">NP_001136221.1</a>
<b>Reactivity</b>	Human, Mouse
<b>Predicted</b>	Bovine
<b>Host</b>	Rabbit
<b>Clonality</b>	Polyclonal
<b>Isotype</b>	Rabbit IgG
<b>Clone Names</b>	RB23967
<b>Calculated MW</b>	113842
<b>Antigen Region</b>	109-138

## Additional Information

---

<b>Gene ID</b>	222223
<b>Other Names</b>	UPF0577 protein KIAA1324-like, Estrogen-induced gene 121-like protein, hEIG121L, KIAA1324L, EIG121L
<b>Target/Specificity</b>	This KIAA1324L antibody is generated from rabbits immunized with a KLH conjugated synthetic peptide between 109-138 amino acids from the N-terminal region of human KIAA1324L.
<b>Dilution</b>	WB~~1:1000 IHC-P~~1:100~500 FC~~1:10~50 E~~Use at an assay dependent concentration.
<b>Format</b>	Purified polyclonal antibody supplied in PBS with 0.09% (W/V) sodium azide. This antibody is purified through a protein A column, followed by peptide affinity purification.
<b>Storage</b>	Maintain refrigerated at 2-8°C for up to 2 weeks. For long term storage store at -20°C in small aliquots to prevent freeze-thaw cycles.
<b>Precautions</b>	KIAA1324L Antibody (N-term) is for research use only and not for use in diagnostic or therapeutic procedures.

## Protein Information

---

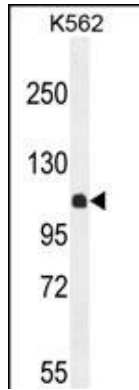
<b>Name</b>	ELAPOR2 ( <a href="#">HGNC:21945</a> )
<b>Function</b>	Functions as a regulator of the BMP signaling pathway and may be involved

in epidermal differentiation.

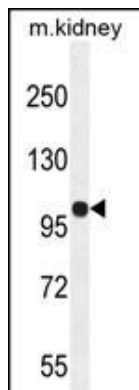
## Cellular Location

Cell membrane {ECO:0000250 | UniProtKB:Q6DDW2}; Single-pass type I membrane protein

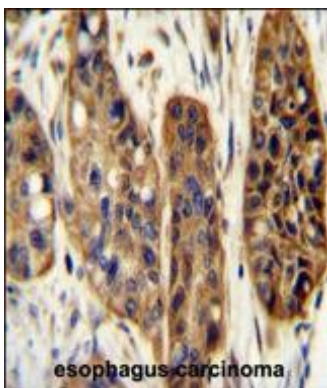
## Images



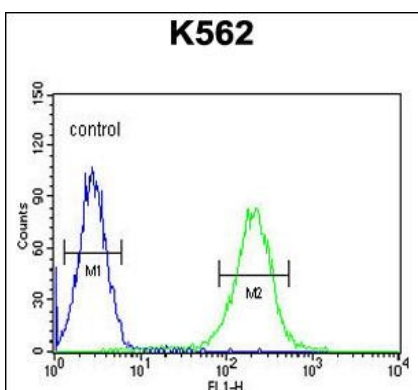
KIAA1324L Antibody (N-term) (Cat. #AP10971a) western blot analysis in K562 cell line lysates (35ug/lane). This demonstrates the KIAA1324L antibody detected the KIAA1324L protein (arrow).



KIAA1324L Antibody (N-term) (Cat. #AP10971a) western blot analysis in mouse kidney tissue lysates (35ug/lane). This demonstrates the KIAA1324L antibody detected the KIAA1324L protein (arrow).



KIAA1324L Antibody (N-term) (Cat. #AP10971a) immunohistochemistry analysis in formalin fixed and paraffin embedded human esophagus carcinoma followed by peroxidase conjugation of the secondary antibody and DAB staining. This data demonstrates the use of the KIAA1324L Antibody (N-term) for immunohistochemistry. Clinical relevance has not been evaluated.



KIAA1324L Antibody (N-term) (Cat. #AP10971a) flow cytometric analysis of K562 cells (right histogram) compared to a negative control cell (left histogram). FITC-conjugated goat-anti-rabbit secondary antibodies were used for the analysis.

Please note: All products are 'FOR RESEARCH USE ONLY. NOT FOR USE IN DIAGNOSTIC OR THERAPEUTIC PROCEDURES'.