

CP013 Antibody (N-term)

Affinity Purified Rabbit Polyclonal Antibody (Pab)

Catalog # AP11012a

Product Information

Application	WB, IHC-P, E
Primary Accession	Q96S19
Other Accession	NP_001035251.1 , NP_115742.3
Reactivity	Human, Hamster
Host	Rabbit
Clonality	Polyclonal
Isotype	Rabbit IgG
Clone Names	RB25754
Calculated MW	22578
Antigen Region	1-30

Additional Information

Gene ID	84326
Other Names	UPF0585 protein C16orf13, C16orf13
Target/Specificity	This CP013 antibody is generated from rabbits immunized with a KLH conjugated synthetic peptide between 1-30 amino acids from the N-terminal region of human CP013.
Dilution	WB~~1:1000 IHC-P~~1:100~500 E~~Use at an assay dependent concentration.
Format	Purified polyclonal antibody supplied in PBS with 0.09% (W/V) sodium azide. This antibody is purified through a protein A column, followed by peptide affinity purification.
Storage	Maintain refrigerated at 2-8°C for up to 2 weeks. For long term storage store at -20°C in small aliquots to prevent freeze-thaw cycles.
Precautions	CP013 Antibody (N-term) is for research use only and not for use in diagnostic or therapeutic procedures.

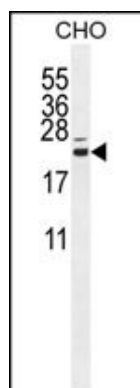
Protein Information

Name	METTL26 (HGNC:14141)
Synonyms	JFP2

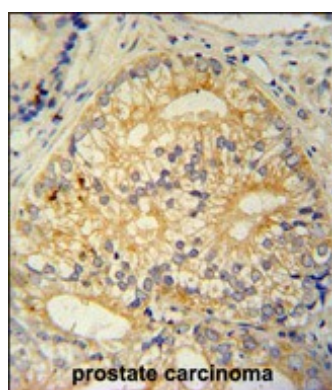
References

Oh, J.H., et al. Mamm. Genome 16(12):942-954(2005)
Daniels, R.J., et al. Hum. Mol. Genet. 10(4):339-352(2001)

Images



CP013 Antibody (N-term) (Cat. #AP11012a) western blot analysis in CHO cell line lysates (35ug/lane). This demonstrates the CP013 antibody detected the CP013 protein (arrow).



CP013 antibody (N-term) (Cat. #AP11012a) immunohistochemistry analysis in formalin fixed and paraffin embedded human prostate carcinoma followed by peroxidase conjugation of the secondary antibody and DAB staining. This data demonstrates the use of the CP013 antibody (N-term) for immunohistochemistry. Clinical relevance has not been evaluated.

Please note: All products are 'FOR RESEARCH USE ONLY. NOT FOR USE IN DIAGNOSTIC OR THERAPEUTIC PROCEDURES'.